



Here for Good

Community Foundation
for Monterey County

PHILANTHROPY BY

DESIGN



ANNUAL REPORT

2016



Here for Good

Community Foundation for Monterey County



VISION

HEALTHY, SAFE, VIBRANT
COMMUNITIES



MISSION

TO INSPIRE PHILANTHROPY
AND BE A CATALYST FOR
STRENGTHENING
COMMUNITIES THROUGHOUT
MONTEREY COUNTY



2016 QUICK FACTS

**\$15.4
MILLION**

Grants, Awards and
Scholarships Approved
for Distribution to
415 Grantees

TOP 100

Community
Foundations in the
U.S. (in asset size)*

**Columbus Survey 2016*

**\$152
MILLION**
in Cumulative
Grantmaking Since
1981

**\$209
MILLION**

Assets Grew 14.8% to
a Record \$209 Million

**\$34.5
MILLION**
in Contributions
Received

**56
NEW
FUNDS**
Created

1.25%
of Total Assets
Used for Operating
Expenses

PHILANTHROPY BY DESIGN

- 1 • Message to the Community
- 2 • Philanthropy by Design
- 3 • Celebrating Philanthropy
- 4 • Scholarships
- 5 • Women's Fund
- 6 • Affiliate Funds

IMPACT

- 7 • Monterey County Gives!
- 8 • Building Healthier Communities
- 9 • Leaving a Legacy
- 10 • Soberanes Fire Fund
- 11 • Grantmaking Overview
- 12 • Stories of Impact

DONORS

- 14 • Our Family of Funds
- 17 • What Our Donors Say
- 18 • 2016 Donors

STEWARDSHIP

- 28 • Investments & Grants
- 29 • Financials
- 30 • Leadership: Board, Staff, Committees
- 31 • Partner with Us



Dan Baldwin, CFMC President/CEO (l) and Greg Chilton, 2016 Chair (r)

Richard Green

“HOW WE INVEST, HOW WE GRANT, HOW WE HONOR DONOR INTENT – IS A TOP PRIORITY OF YOUR COMMUNITY FOUNDATION EACH AND EVERY DAY.”

– Dan Baldwin,
CFMC President/CEO

MESSAGE TO THE COMMUNITY

From the Chair & President/CEO

2016 offered a clear reminder of how remarkable Monterey County is, and, in some respects, how fragile. It also reminded us of the important role of philanthropy and the Community Foundation for Monterey County.

By any measure, we can describe 2016 as one of the best years in the CFMC's 36-year history. Our total assets grew from \$180 million to \$209 million. Grantmaking grew from \$9.8 million to a record \$15.4 million. More than \$34 million in gifts were made to the CFMC, also a record. These numbers represent a tremendous spirit of giving in Monterey County, and a growing belief that the CFMC is a trusted partner for those wanting to make a difference in their community.

But numbers don't tell stories. 2016 will long be remembered as the year of the Soberanes Fire. One illegal campfire caused 132,000 acres in Big Sur to burn, destroyed 57 homes, and became the most expensive wildfire in U.S. history. It displaced families. It had a tremendous effect on Big Sur businesses, putting many of their workers' jobs at risk. We started the Soberanes Fire Fund in the days after its onset, then watched in amazement as gifts began to pour in from across the country, special events were organized, and the generosity driven by neighbors helping neighbors took hold. Nearly \$1 million was raised that provided support to families and the ability to help rebuild infrastructure.

2016 saw a renewed commitment to college-bound students. A general increase in the awareness of the benefits and cost of higher education motivated many new donors to start scholarship funds. This is leveraged by a new partnership we have with the College Futures Foundation, creating a marked increase in our scholarship capacity. Simply put, this means more young people will be headed to college and have the ability to make larger contributions to our community.

Community foundations are reflections of philanthropic spirit. We cite the CFMC's assets, but they exist only because individuals and families made choices to utilize philanthropy as a way of reinvesting in Monterey County. The stewardship of those assets – how we invest, how we grant, how we honor donor intent – is a top priority of your community foundation each and every day.

We hope you enjoy the 2016 annual report. It is filled with wonderful examples of how donor decisions aligned with CFMC stewardship and allowed for continuing support to organizations that are committed to making Monterey County stronger.

Daniel R. Baldwin
President/CEO

Greg Chilton
2016 Board Chair

DONORS +
GRANTS +
NONPROFITS =

HEALTHY, SAFE, VIBRANT
COMMUNITIES



PHILANTHROPY BY DESIGN

No two people have exactly the same reasons and goals for giving. The Community Foundation for Monterey County (CFMC) crafts individual solutions to help each person achieve his or her unique philanthropic vision. Distinguished Trustee Award Recipient Bill Tyler (see page 3) coined the phrase “design studio for philanthropy” when describing the CFMC, inspiring the theme for this year’s annual report: “Philanthropy by Design.”

Individuals, families or businesses can meet with foundation staff, learn about charitable giving options and create a plan that works best for them. With tools such as donor advised funds, life-income vehicles such

as charitable gift annuities or charitable remainder trusts, and thoughtful estate planning, donors can make the impact they want during their lifetime and beyond.

It all connects. Donors establish funds and recommend grants. Grants fuel nonprofit organizations and programs in Monterey County and beyond. Nonprofit programs and services help create healthy, safe, vibrant communities.

We invite you to pull up a chair at the table. As Bill Tyler says, “You would be simply amazed at the possibilities.”

CELEBRATING PHILANTHROPY

Distinguished Trustee Award

For more than 25 years, the Community Foundation for Monterey County has recognized an individual or couple who have demonstrated exceptional commitment to supporting local nonprofit agencies.

In 2016 the Distinguished Trustee award was presented to Bill Tyler for his philanthropic leadership. Bill demonstrated his spirit of giving early in life. During WWII he collected Coke bottles and donated pennies to his local community recreation center for servicemen. He now epitomizes the philanthropic spirit by supporting education, health and the arts. His lead gift to the Tyler Heart Institute at Montage Health inspired others to follow suit to create excellent local cardiac care.

Bill and his wife, Susanne, created two donor advised funds at the CFMC to enhance their philanthropy. The Tyler Visiting Fellowship in Residence Fund supports visiting professors at the Middlebury Institute for International Studies, and the William H. and Susanne S. Tyler Pathway Fund facilitates their ongoing philanthropic interests. Bill summed it up this way: "Everyone can participate in helping others."

Distinguished Trustee Honorees

- 2016 - William H. Tyler
- 2015 - Nancy Ausonio
- 2014 - F. Robert Nunes
- 2013 - Warren Wayland
- 2012 - David and Laurie Benjamin
- 2011 - Mike and Mary Orradre
- 2010 - Bob and Sue Antle
- 2009 - Julie Packard
- 2008 - Sherrie McCullough
- 2007 - Maggie Downer
- 2006 - Clint and Dina Eastwood
- 2005 - Ed and Terry Haber
- 2004 - Michael McMahan, Neal McMahan, Marsha McMahan Zelus
- 2003 - Davis Factor, Jr.
- 2002 - Joanne Taylor-Johnson
- 2001 - Hilton and Roberta Bialek
- 2000 - William and Nancy Doolittle
- 1999 - Jim and Jeri Gattis
- 1998 - Patricia Tynan Chapman
- 1997 - Margaret Owings
- 1996 - Basil E. Mills
- 1995 - David Packard
- 1994 - Harriet R. Thurmond, Sarah T. Hermann
- 1993 - Francis H. Cislini
- 1992 - Marshall Steel, Jr.
- 1991 - Virginia Stanton, Gordon Paul Smith
- 1990 - Ruth P. Fenton
- 1989 - John A. McCone

"THE CFMC IS A
DESIGN STUDIO THAT
INVITES YOU TO PULL
UP A CHAIR AT THE
TABLE. YOU WOULD BE
SIMPLY AMAZED AT THE
POSSIBILITIES."

– Bill Tyler,
2016 Distinguished Trustee

Vice President of Philanthropic Services Christine Dawson (r) presents Tyler with his favorite childhood treats



CFMC supporters applaud the impact made by the grants through CFMC





CFMC Scholarship Recipient MPC student Esteban Barajas

Michael Toutman

"Receiving a scholarship was a big motivation for me. Any amount of money always helps and I am extremely grateful."

- Esteban Barajas,
Monterey Peninsula College Student

SCHOLARSHIPS

Creating Opportunity

2016 was a record year for scholarships. We awarded over \$380,000 to 123 students through 31 scholarship programs, (a 33% increase in dollars and 45% increase in students from 2015). Many new scholarships came through corporate partners who wanted to support the education of their employees and their children.

The Morse Foundation Scholarship Fund awarded \$55,000 to 14 children of employees at the Monterey Peninsula Country Club, and Church Brothers/True Leaf Farms awarded \$35,000 to 14 employees and children of employees to attend college or learn a trade. Our staff worked with leaders in both organizations to determine award criteria, promote the opportunity to employees, collect and review applications and select the recipients.

For those wishing to create opportunity for young people, scholarship funds are one of the most effective and fulfilling ways to give. Scholarship funds can be customized to represent your values and specific areas of interest. Or, for even greater impact, you can co-invest in College Futures Monterey County (right) to reach students with the greatest need.

Designed for Student Success

At a time when the cost of college continues to rise and the need for higher education has never been greater, it is inspiring to see so many giving generously to support students' dreams of earning a college degree. Our Philanthropic Services team works with families, organizations, and businesses to design scholarship programs that meet their goals, and manages each step from application to award. Scholarships vary from one-time awards of \$500 to a four-year scholarship of \$60,000, and benefit students from public and private high schools throughout the county.

College Futures Monterey County

In 2016 the CFMC began work on a new initiative to support college attainment - College Futures Monterey County. Through a partnership with CSU Monterey Bay, we are helping high school students prepare academically, apply to the college of their choice, understand and take advantage of financial aid opportunities. This support is paired with a scholarship of up to \$5,000. This wrap-around approach - combining advising, public financial aid, and private scholarships - is an important part of our effort to increase the number of college graduates in Monterey County.

www.cfmco.org/collegefutures

Hugo and Dolores Tottino Family Scholarship Fund

For the Tottinos, supporting the community they have long called home is an important value. Their business, Ocean Mist Farms, was co-founded by Hugo's father, Alfred, as California Artichoke & Vegetables Growers in 1924. To give back to the Castroville community, Hugo and his wife, Dolores, established the Hugo and Dolores Tottino Family Scholarship Fund. They annually award \$2,500 each to four students at North Monterey County High School and are happy to be able to instill the importance of an education by providing scholarships to local students.

"This scholarship is given to students who show integrity, quality, passion and success in their daily life decisions and pursuit of higher education." - Michele (Tottino) Pecci

The Hugo and Dolores Tottino Family Scholarship is one of more than 30 scholarship funds managed by the CFMC with a total value of over \$6.2 million. For more information on creating or applying for a scholarship, visit:

www.cfmco.org/scholarships



The Tottino Family: Karen, Cathy, Dolores, Hugo, Michele, David and Les



(l) Womens Fund Leadership Council Chair, Tonya Antle, center, encourage GHGH alumnae
(r) 2016 Women's Fund luncheon inspired

WOMEN'S FUND

Changing Lives of Women & Girls



The Women's Fund is making strides in its key investment areas - the future of girls and women's economic security.

Girls' Health in Girls' Hands



Formed by the Women's Fund in 2012 for girl-led health empowerment, Girls' Health in Girls' Hands (GHGH) is a countywide collaborative of six girl-serving agencies. It helps girls ages 11-18 gain better access to health information, leadership skills and advocacy training. Over 550 girls from 22 sites are participating, and more than 1,500 girls have been impacted since the start of the program.

GHGH Scholarships Created

At the 2016 Women's Fund luncheon, we took our support beyond high school and created the GHGH Scholarship program. Seventeen scholarships totaling \$30,000 were awarded to GHGH alumnae from participating organizations.

"I now have the financial support to fund my tuition at the University of California, Berkeley. This scholarship is allowing me to achieve my academic and life dreams. I feel so blessed to have organizations like the Women's Fund supporting and believing in students like me," said Bella-Graciela Chavez, GHGH scholarship recipient and UC Berkeley student.

Our vision is that every woman and girl in Monterey County has what she needs to be healthy, confident and able to fulfill her dreams.

Women's Economic Security Initiative

WOMEN'S economic security INITIATIVE

The Women's Economic Security (WES) Initiative is a three-year effort designed to help low-income women move their families out of poverty. Through peer-led community groups named "Women in Action" in Salinas, Castroville and Soledad, women are accessing education, training and support services they need. The program is operated by the ACTION Council of Monterey County through a Women's Fund grant.

Since the program began, the women are taking advantage of the opportunities that expand their potential. Participants have increased their confidence and sense of self-worth through achievements in school, taking part in their local PTAs, speaking at Monterey County Board of Supervisors meetings, and even leaving abusive relationships. WES has inspired these women to make positive changes in their lives.

www.cfmco.org/womensfund

GHGH is a collaborative program of the Boys and Girls Club of Monterey County in partnership with Girls' Inc., of the Central Coast, Monterey County Health Department, Monterey County Rape Crisis Center, Planned Parenthood Mar Monte and YWCA Monterey County.

PLACE-BASED PHILANTHROPY

Affiliate Funds

Imagine a group of engaged citizens wanting to create a unique resource, one that will have an immediate impact, yet will continue to grow and support future generations. Because Monterey County is large and diverse, we work with, support and empower people in specific geographic areas to design new and targeted ways to strengthen their own communities.

One of the best examples of philanthropy by design is an affiliate fund. These funds are created by local community members. Like a foundation within the foundation, each is led by its own advisory board and serves a specific region in Monterey County. The CFMC handles all administrative details, while the advisory board raises funds and recommends grants for their region.

Southern Monterey County Foundation

The CFMC's first affiliate fund was created in 2013. The Southern Monterey County Foundation (SMCF) was designed and developed by local residents to give back to King City and points south. 2016 marked the third year of grantmaking, with \$15,000 awarded to eleven grantees. In total, the SMCF has already granted over \$50,000. The SMCF is supported by individuals and business that have joined their "Founding Family" by pledging \$5,000 over the first five years of the foundation. These donations will be split between immediate grantmaking and endowment building.

 www.cfmco.org/SMCF

Northern Monterey County Foundation

In 2016, following several community meetings, North County residents created the Northern Monterey County Foundation (NMCF). With an Advisory Board of eleven North Monterey County residents, chaired by local businessman Don Chapin, the NMCF serves the communities of Aromas, Bolsa Knolls, Boronda, Castroville, Elkhorn, Las Lomas, Moss Landing, Oak Hills, Pajaro, Prunedale, Royal Oaks and Santa Rita. Thanks to the generous donations of Advisory Board members and other philanthropic residents and business, the NMCF quickly raised \$207,000 in donations and pledges. Half of all donations will go to immediate grantmaking, while the other half will build an endowment to create a permanent philanthropic resource. The group will award its first grants in 2017. These competitive grants will support nonprofits and other groups serving North County.

 www.cfmco.org/NMCF

To learn more, please contact the CFMC at 831.375.9712.



Standing (l to r): NMCF supporters Don Chapin, Linda Grier, Anne Herendeen, Karen Miller, Joe Pezzini, Leslie Austin, John Phillips, Rich Coffelt. Seated: Nancy Ausonio, Lou Calcagno



BECAUSE MONTEREY
COUNTY IS LARGE AND
DIVERSE, WE SUPPORT AND
EMPOWER PEOPLE IN SPECIFIC
GEOGRAPHIC AREAS TO DESIGN
NEW AND TARGETED WAYS
TO STRENGTHEN THEIR OWN
COMMUNITIES.



Southern Monterey County Foundation grantees celebrate

MONTEREY COUNTY GIVES!

Big Ideas
Take Flight



This year-end giving program
boosts nonprofits and helps
donors leverage their
support through matching funds.

MONTEREY COUNTY GIVES! Special Awards

Each year, the CFMC makes three special awards at a Monterey County Gives! grantee gathering in February. In 2016, the Village Project won the \$2,500 Ingenuity Award for its big idea of providing a technology lab to teach children coding skills. Peace of Mind Dog Rescue received a \$1,000 grant for having the most donors, and the Monterey Museum of Art received \$1,000 for having the most donors ages 18-35.

MONTEREY COUNTY GIVES!

Leveraging Year-End Giving

Monterey County Gives! has grown from modest beginnings to a record \$3.6 million awarded to local nonprofits in 2016. Gives! has inspired \$12.3 million in donations and grants since the Monterey County Weekly first established its donor advised fund in 2000.

Each fall, Monterey County Gives! focuses on "Big Ideas" from more than 120 local nonprofits. Donors are directed to a website for efficient, simple online giving. Donors can choose the amount of money given and customize the number and kind of causes they wish to support. For many it has become a year-end giving tradition.

In 2016, the total awarded included \$350,000 of match made possible by key support from the Monterey Peninsula Foundation, David and Lucile Packard Foundation, the Neumeier Poma Investment Council, the Cannery Row Company and others. Individuals donors contributed \$471,000 in challenge gifts to help spur support for their favorite nonprofit. Donors appreciate that their gift can have a greater impact through the match. More than 4,200 individuals, families and businesses contributed in 2016, giving a tremendous boost to participating agencies

The growth once again surpassed all expectations. It seems we say that every year. We look forward to saying it again next year.

 www.cfmco.org/mcgives



MC Gives! is a partnership between the Monterey County Weekly, the CFMC and the Monterey Peninsula Foundation. Thanks to Neumeier Poma Investment Counsel, The David and Lucile Packard Foundation and Cannery Row Company for their generous support. The Monterey County Weekly Community Fund is a donor advised fund of the CFMC.



Mel Mason (r) shares his passion for the Village Project with Monterey Peninsula Foundation CEO Steve John (l) and Monterey County Weekly Publisher Bradley Zeve



The Hayward family, Bill, Tatiana, Delphinia, William, Venezia and Adriana Not pictured: Hannah

“WE CAN GIVE BOTH LOCALLY AND OUTSIDE THE AREA AND INVOLVE OUR FAMILY. IT’S NEVER TOO EARLY TO BEGIN BUILDING HEALTHIER COMMUNITIES.”

- Bill and Adriana Hayward,
Donor Advised Fund Holders

BUILDING HEALTHIER COMMUNITIES

The Hayward Family

Bill and Adriana Hayward were inspired early in life by their parents. They were role models who gave thoughtfully and generously to causes that mattered to them. The Haywards count themselves very fortunate to be part of successful family businesses, which now involve the fourth and fifth generations.

Sharing their Values

Bill and Adriana are intentional about passing their values to their five children. At an annual family meeting, Adriana coordinates teambuilding exercises across generations, which always involve a philanthropic component. “The children see us volunteer and we volunteer as a family. They know that giving even a little bit can make a difference,” explains Adriana.

Giving Time

Adriana, a licensed clinical psychologist, participates in Rachel’s Network, an organization concerned with global environmental sustainability. She also gives of her time locally, serving on the boards of the SPCA of Monterey County, the Monterey Museum of Art, and the Monterey Peninsula Ballet Theatre. Bill is currently chair of the Nancy Eccles and Homer M. Hayward Foundation, and Chair Emeritus of the Forestry Stewardship Council. Growing up in the lumber business, he was struck by the importance of maintaining healthy forests, and their impact on the environment. As CEO of Hayward Lumber, he pioneered sustainability in the 1990’s and continues to be an industry leader in green building products.

Giving Back

Adriana’s love of nature began as a child. She cares deeply about animals, supporting Saving the Sea Otters as a teenager. In addition to animal welfare, they use their donor advised fund at the CFMC to support youth, the arts and of course, the environment.

Healthy Homes

After a family experience with illness caused by environmental factors in their home, the Haywards researched solutions. They built a house with continuous fresh air, non-toxic products, and other features, creating a new standard. Together, Bill and Adriana are working on the nexus between human health and the built environment. Their family mission is to “help families live healthy.” See more of their story at www.haywardhealthyhome.com, where a free new tool, the HaywardScore.com, teaches families how their home may be impacting their health.



“It’s amazing how the Community Foundation brings diverse people and passions together. They look out for the investments and give us good ideas of programs to fund. When the CFMC is involved we have confidence.”

- Adriana Hayward, CFMC Donor Advisor



Guests enjoy the Legacy Luncheon

Michael Troutman



Dale Meyer shared how making grants from their endowed fund gave her mother great joy towards the end of her life.

Richard Green

LEAVING A LEGACY

A planned gift is one of the most meaningful and personal ways to give. With thoughtful estate planning, you can rest assured your philanthropic resources will communicate your values, experiences and interests and benefit the causes that matter to you most.

Stewardship

The Community Foundation for Monterey County fulfills each donor's wishes so you can have peace of mind knowing your intentions will be honored in the future. Dale Meyer, CFMC donor advised fund holder and 2016 Legacy Luncheon speaker, noted, "It's gratifying to know that the endowed fund will go on in

perpetuity, meaningfully and purposefully. The Community Foundation has been pivotal to my family as a partner in philanthropy."

The Legacy Society

The Legacy Society honors those who have named the Community Foundation for Monterey County in their estate plan, contributed more than \$25,000 to an endowed fund, or established an endowed fund during their lifetime. Members are invited to an annual luncheon to learn about the impact of legacy giving.

If you have included the CFMC in your estate, please let us know so we may recognize your generosity. Legacy Society members may also choose to remain anonymous.

The CFMC's Guide to Planned Giving can help you explore the many available options to create your own legacy of giving, from retirement plans and estate gifts, to gifts that offer income such as charitable remainder trusts or charitable gift annuities. Please call 831.375.9712 to learn more.

 www.cfmco.org/legacy

Anonymous (7)
Mrs. Wilber K.
Amonette*
Tonya and Rick Antle
Yvonne A. Ascher and
Leonard Laub
Tony Ayres
Daniel R. Baldwin and
Anne Ylvisaker
Robert P. Balles
Nancy L. Bartell
John B. Bergin*
Paul P. Bianchi
Nancy Bletzer
Joyce Blevins and
Katherine M. Coopman
James W. Bogart
Thomas Bohnen
Jay and Ann Brown
Julie A. Cason and
Lisa K. Crawley
Joseph* and
Betty Chaffers
Mishka Chudilowsky
and Henry Azama
Arthur Connell*
Julie Conrad
Leland* and
Gloria Dake
Robert N. Danziger and
Martha Drexler Lynn
Margaret D'Arrigo-Martin

Larry Davidson and
Beverly Dekker-
Davidson, Dekker
Davidson Foundation
Wallace F.* and
Lucille Davis*
Christine Dawson
Steve and Sona Dennis
Martin Dodd*
William and
Nancy Doolittle
Julie Drezner
Stephen Eimer and
Kevin Ann Cartwright
Frances H. Elgan*
Roberta Elliott
Norma Esselstyn
Lowel I. Figen*
Cyrus and Jean* Fitton
Crawford E. and
Linda P. Foy
Susie and
Charly Franklin
Joel S. and
Dena Gambord
James and Jeri Gattis
Donald and
Frances Gaver
Lupe Gomez
Rodney Guilfoil*
Terry Haber
Ruth Hartmann

Peter C. Hatton
Virginia O. Hawes
Dick Hawkinson*
Thomas Hawley
Carol and Don Hilburn
Richard Hoble and
Deborah Steel
Jeffrey and
Amanda Holder
Jeanne S. Holmquist
Robert and Millie House
Chris and Tola Hubbard
Jack Jewett
Craig and
Christine Johnson
Joanne Taylor Johnson
Mark and Susan Johnson
Colburn and Alana Jones
Deborah Juran
Karen D. Kadushin
Mary Ann Kane
Rick and Martha Kennifer
Alice V. Kinsler
Paul Lawrence* and
Marion Buccafurni
Douglas C. Lee
Laurel Lee-Alexander
Jennifer Levey
David S. and
Norma Lewis
Esther H. Lindsey
Robert H. Lindsey

Janette Loomis
Todd Lueders
Valera W. Lyles
Tom and
Kathy Macdonald
John and Ann Mahoney
Jan and Tannie* Mandel
Roger and
Carolann Manley
Michael and Tobi Marcus
Joseph A. and
Sheila Mark
Jan McAlister
Sherrie McCullough
Terry A. McHenry and
Joan Smith McHenry
Thomas D. Melville
Lenore Meyer*
Malcolm* and
Joanne Millard
Sidney Morris
Tony and Lary Muller
Alec and Kim Murdock
David M. Nee
Vicki Nelson
Diane R. Nonella
F. Robert Nunes
Alfred P. Oliverio
Charles Olvis and
Miranda Morris
Mike and Mary Orradre

Nicholas M. and
Nicollette Pasculli
Ken Petersen
John Phillips and June
Dunbar Phillips
Gregory A. and
Winoma Plaskett
Margaret L. Radunich
Rex and Joan Reade
Reid-Robnett Family Trust
Paul Rochester*
Lee and Shirley Rosen
Jean Rudolph*, The
Lauralie Irvine
Foundation
James C. Sanders
John C. Sanders
Kenneth C. Schley
Carol Shade
JeriAnn Shapiro
Connie Shelstad
Robert B. Sheppard*
Janet L. Shing
Sidney Sue Slade
Madison Smith*
Pamela D. Smith*
Charles and Leslie Snorf
George Somero and
Amy Anderson
David and
Maryanne Spradling
Jean Stallings

Loren Steck and
Annette Yee Steck
Judy Sulsona and
Bill Rawson
Tom Sweeney
Robert and Leslie Taylor
Fredrick W. Terman
and Nan Borreson
Brian Thayer
Peter and Anne Thorp
Vincent and Evelyn* Torras
William H. and
Susanne S. Tyler, III
Patricia Tynan-Chapman
William Umeki
James R. Valentine
Robin Venuti and
Joseph Rock
Arlene Wall
Jacqueline Wendland
Benjamin and Mary
Ann Whitten
Nels and Jill Wiegand
Martin Wolf
Kenneth and Mary Wright
Richard Zahm*
**In Memoriam*



Photos: Michael Troutman, DMT Imaging

(l) The Soberanes Fire
(r) Signs of renewal followed the destruction

SOBERANES FIRE FUND

Relief, Recovery & Rebuilding

The blaze that began with an illegal campfire on July 22, 2016 grew rapidly, creating the most expensive wildfire in U.S. history. Thankfully the philanthropic response was also swift. The Soberanes Fire Fund was created within 72 hours after the fire began to provide resources for relief, recovery and rebuilding.

In addition to individual contributions, dozens of fundraising events created outlets for community support (see page 24). More than 8% of the gifts came from individuals outside California and even other countries.

"We're proud to be in a position to facilitate a philanthropic response when disasters happen," said Dan Baldwin, CFMC President/CEO.

Gifts & Grants

More than \$980,000 was donated with gifts as small as \$5 and as large as \$110,000. A special volunteer grant committee, made up of veteran grantmakers and people from Big Sur, worked to award grants totaling \$517,370 in 2016. An additional \$438,000 was granted through May 2017.

Relief

Donations supported immediate relief to evacuees, property owners, renters and caretakers who suffered a complete loss. Volunteers also donated their time, working side by side with Palo Colorado neighbors to assist with ash and debris removal.

Recovery

In the recovery phase, grants supported repair and replacement of water systems, reimbursement to property owners, and inspection and repair of burnt out septic systems.

Rebuilding

Repair and maintenance of shared private roads remains a key concern. Already a problem before the rains, roads were damaged further due to flooding and debris from winter storms. Grants have supported culvert repair, replacement and maintenance with gravel, road base, and plastic to stabilize areas until permanent repairs can be made.



"The residents of Palo Colorado are very grateful for the community support."

- Patte Kronlund and Jerri Hansen,
Coast Property Owners Association
Advisory Committee



Soberanes Fire Fund Grants* \$954,046 Awarded

Coast Property Owners Association (CPOA) \$10,000 - Relief to displaced residents
CPOA \$30,000 - Relief for property owners who lost their dwelling
CPOA \$25,000 - Relief for property owners, renters and caretakers who lost their dwelling
Community Emergency Response Volunteers of the Monterey Peninsula \$10,000 & \$20,000 - Relief to Carmel Valley residents displaced by the Soberanes Fire
CPOA \$306.72 - Reimbursement for bottled water for Palo Colorado residents
Middlebury Institute for International Studies at Monterey \$20 - Spanish translation for fire victim resource guide
Mid-Coast Fire Brigade \$36,756.40 - Water tanks and community signage

CPOA \$120,000 - Water system subsidy for uninsured or underinsured property owners
CPOA \$24,000 - Septic system inspection fees for uninsured or underinsured property owners
Boy Scouts of America Silicon Valley Monterey Bay Council \$18,000 - Fire management plan and tree removal equipment for Camp Pico Blanco
CPOA \$24,610 - Support for artisan food producers from Cultura Carmel Fundraiser
Big Sur Land Trust \$50,000 - Restoration projects at Mitteldorf Preserve
CPOA \$97,353 - Road repair and replacement of culverts to prepare for winter rains
CPOA \$50,000 - Ash & debris removal in Palo Colorado
CPOA \$50,000 - Emergency road repair due to winter rains
CPOA \$200,000 - Reimbursement of immediate relief and ash and debris removal
CPOA \$188,000 - Ongoing rebuilding; residential water system repair, ash, debris and hazardous waste removal, road reconstruction



Monterey County Gives! nonprofit participants

Monterey County Weekly Community Fund

GRANTMAKING OVERVIEW

\$15.4 Million Awarded

In 2016 the CFMC, together with its donor advisors, distributed over \$15.4 million through 1,076 grants to 503 agencies working towards healthy, safe, vibrant communities.

Community Impact Grants

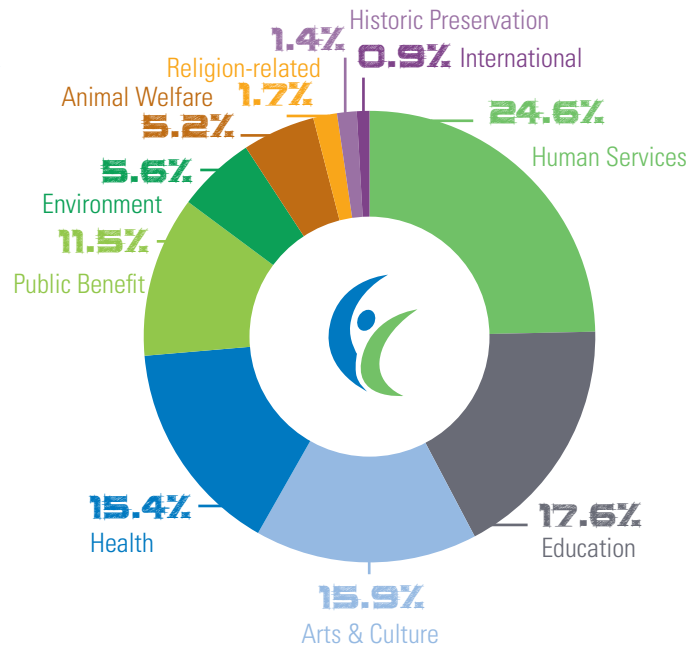
Field of interest and unrestricted funds, created by generous donors through their estates, fuel the CFMC's competitive grantmaking programs. The CFMC board of directors approved more than \$2.7 million in grants through the foundation's competitive programs and leadership initiatives. These philanthropic resources combine to strengthen organizations that serve Monterey County's children and youth, provide health and human services, enhance arts and culture, and support community development, animal welfare and the environment.

Partnering with Funders

The CFMC appreciates our continuing collaboration with local funding partners. Grants from the College Futures Foundation, Claire Giannini Fund, Monterey Peninsula Foundation, Nancy Buck Ransom Foundation, the David and Lucile Packard Foundation, Tanimura Foundation and Vanguard Charitable enhanced CFMC programs and initiatives.

Beyond Grantmaking

The CFMC also strengthens the nonprofit sector beyond grantmaking. The Center for Nonprofit Excellence (CNE) works with nonprofit staff, board and volunteers to expand nonprofit capacity and sustainability.



GRANTS BY PROGRAM AREA

Human Services	\$ 3,793,794
Education	2,720,798
Arts & Culture	2,459,860
Health	2,385,663
Public Benefit	1,778,233
Environment	868,911
Animal Welfare	803,757
Religion-related	265,768
Historic Preservation	219,763
International	144,870

\$15,441,416

Center for Nonprofit Excellence

Based on their needs and interests, nonprofits can take a customized approach to boosting their effectiveness. Of the 158 organizations CNE served in 2016, many engaged in multiple offerings. Sun Street Centers, for example, attended workshops, sent staff to LEAD Institute and received an Organizational Development grant. They also worked with pro bono consultants through Stanford Alumni Consulting Team to strengthen their business plan and prepare for growth. When you put it all together Anna Foglia said, "The CNE is a crucial resource to us and an important part of our enhancement as an organization!"



Center for Nonprofit Excellence workshop attendees

STORIES OF IMPACT

The Community Foundation for Monterey County invests in local nonprofits meeting needs throughout Monterey County. Grant committees, made up of CFMC board members and community volunteers, review proposals and select projects with the greatest potential to make a meaningful difference. View recent Community Impact grants on our website.

 www.cfmco.org/recentgrants

Children and Youth Hartnell College Foundation

\$25,000 for STEM K-12 enrichment

Young innovators have the chance to put down computer games and start creating them thanks to STEM programming through Hartnell College's NASA and Coder Dojo programs. A \$25,000 Community Impact grant to the Hartnell College Foundation provided STEM (science, technology, engineering and mathematics) classes for up to 6,000 students during the summer and school year in Monterey County.

"The United States has built its leadership in engineering and technology through brilliant innovators in the fields of STEM," said Jackie Cruz, Hartnell College Vice President of Advancement and Development. "These fields feed our medical, agricultural, and technology-based jobs. Today, we're faced with a shortage of young adults entering STEM-related fields, and we're addressing this concern at the community level."

The program has expanded to rural parts of Monterey County by partnering with school districts in Northern and Southern Monterey County. "A child engaged in Hartnell's K-12 STEM programming will have accumulated close to 50 hours of hands-on, after-school STEM experiences," says Cruz.

Health and Human Services Legal Services for Seniors

\$15,000 for no-cost legal services for local seniors

Seniors are prime targets for scams, denial of benefits and other legal problems that threaten their health, housing and livelihoods. "Legal recourse is hard to come by when living in poverty or on fixed incomes," said Kellie Morgantini, Executive Director of Legal Services for Seniors.

A \$15,000 grant provided professional no-cost legal services to Monterey County's seniors in most areas of civil law including health care and insurance, Medicare, Medi-Cal, Social Security disability, housing, public benefits, consumer protection, financial and physical elder abuse, probate guardianship of minor children, wills, advance health care directives and even court representation.

"Eighteen percent of Monterey County's seniors live in poverty. Many are denied equal access to justice because they cannot pay an attorney and pay for the necessities of food, clothing, shelter and medical care at the same time. If LSS were not here to help our seniors in need address their legal problems, those problems would escalate, run unchecked and could eventually result in deteriorated health and potentially homelessness," said Morgantini.

"Philanthropy fuels grants.
Grants create impact. Impact
attracts resources."

- Dan Baldwin,
CFMC President/CEO

(l) Hartnell College Foundation educates future scientists and programmers

(m) Legal Services for Seniors provides help to residents in need



Catholic Charities supports immigration services in South County



Community Development

Catholic Charities of the Diocese of Monterey

\$30,000 for immigration services in Southern Monterey County

In the last six months of 2016, political uncertainty caused an unprecedented surge in people seeking out immigration services from Catholic Charities of the Diocese of Monterey.

"It's very serious," said Terrie Iacino, Executive Director of Catholic Charities. "We have been flooded with immigrants coming in for information – needing to know their rights, where they stand and what they should do in the event a family member is stopped and asked about their status."

A \$30,000 grant supported immigration services and allowed for expansion to Greenfield to serve Southern Monterey County communities. Iacino says stories of children being kept home from school and people fearful of families being broken up by deportations are true, and that the change in immigration policies is prompting long-time green-card holders and others to take citizenship classes to get on the pathway to citizenship. The organization has about 2,000 active immigration cases, and has qualified close to 700 others for Deferred Action for Childhood Arrivals (DACA). "We let our clients know that regardless of what happens, we will walk the road with you, wherever it leads," Iacino said.

Environment

MEarth

\$25,000 for environmental education programs for underserved youth

Monterey County has a reputation for being the "Salad Bowl of the World." A closer look in the produce crisper of your refrigerator will reveal that much of your salad, broccoli and strawberries are produced locally. Yet there's a disconnect with healthy foods failing to reach the dinner tables and lunchboxes of local children in need of nutritious foods.

"There is increasing cultural and economic disparity, lack of nutritious food options, access to nature and education about

healthy and sustainable lifestyle choices," said Tanja Roos, MEarth Executive Director. "It's resulting in systemic issues of nature-deficiency and obesity for our children where in Monterey County alone, 44.6% are overweight or obese."

A \$25,000 grant provided funding for programs to teach local youth about healthy lifestyle choices through programs such as FoodConnect, NatureConnect, ClassroomConnect, School Field Trips, Summer Day Camps, and Carmel River Stewardship Projects. Participants include elementary and middle school students from more than ten elementary schools in Salinas and Monterey. "It is our goal that children not only incorporate the healthy habits they learn in their own lives, but to 'teach up' by inspiring behavior changes in their homes, schools and community," Roos said.

Arts and Culture

First Night Monterey

\$10,000 for free arts education classes and community events

First Night Monterey (FNM) is known for the annual New Year's celebration in downtown Monterey, but there's much more to the organization than a one-night event on the Peninsula.

A \$10,000 grant supported FNM's Greenfield Cultural Arts Center (GCAC). The center holds weekly traditional dance and visual art classes. A local Oaxacan group uses the facility for traditional language and dance classes. All workshops and classes are free for Greenfield residents. Weekly programs serve more than 80 youth and 30 adults.

"The new center has been designed as a cultural facility for the programming, production, presentation, and exhibition of traditional dance, film, literature, visual arts and music," said Ellen Martin FNM Executive Director. Since 2010, FNM has also produced the Greenfield Harvest Festival, a free community celebration of art and culture, annually attracting over 5,000 attendees in a family-friendly, alcohol-free event. "We see the GCAC as an important anchor for the community to foster cultural identity and connection for the residents of Greenfield," Martin said.

Children learn healthy habits at MEarth



First Night Monterey brings cultural arts to Greenfield

OUR FAMILY OF FUNDS

The CFMC holds more than 450 funds created by individuals, families and businesses. Funds can be established to benefit specific organizations, causes, geographic areas, scholarships or unrestricted to respond to changing needs. The CFMC is a steward of both the charitable assets entrusted to us and each donor's philanthropic vision. Please call us at 831.375.9712 to learn more.



Nancy Green (l) and fund holders Birt and Kathleen Johnson enjoy Legacy Society luncheon

Affiliate Funds

A local advisory board provides oversight, defines grantmaking priorities, and raises funds that are distributed to community organizations serving a specific region.

Northern Monterey County Foundation*

Northern Monterey County Foundation (Non-endowed)*

Southern Monterey County Foundation
Southern Monterey County Foundation (Non-endowed)

Agency Endowment Funds

Nonprofit agencies benefit from participation in the CFMC's investment pools, help with planned giving, and grow their sustainability.

39 Craftsmen Fund for Monterey County Youth Museum
All Saints' Day School Endowment Fund**

Alliance on Aging Endowment Fund
Alzheimer's Association of Monterey County

Big Sur Health Center Endowment Fund

The Big Sur Land Trust Conservation Fund

Blind and Visually Impaired Center Fund

Laurie Boone Hogen Appreciation Fund for Excellence in Teaching (All Saints' Day School)

The Boys and Girls Club of the Monterey Peninsula Fund

Carl Cherry Center for the Arts Fund

Friends of the Carmel Valley Library Fund

Carmel Music Society Endowment Fund

Carmel Public Library Foundation Fund

Carmel Public Library Foundation - Children's Fund

Carmel Woman's Club Fund

Casa Amesti Foundation Building Endowment Fund

Casa Amesti Garden and House Fund

David Allen Bernahl II, Local Heroes Fund for CASA

Center for Photographic Art Fund

Chamber Music Monterey Bay Fund

Chartwell School Scholarship Endowment Fund

Children's Services International Fund

Colleagues of the Arts Endowment Fund*

Community Partnership for Youth Fund

Elkhorn Slough Foundation, Inc. Fund

Fred Farr & Edwin Bliss Buckeye Memorial Fund

Fenton Founders' Fund for Youth Music Monterey

Food Bank for Monterey County Endowment Fund

Girl Scouts of California's Central Coast Endowment Fund

Goodwill Industries of Santa Cruz, Monterey and San Luis Obispo Counties Fund

Health Projects Center Fund

Interim, Inc. Mental Illness Endowment Fund

Kinship Center Fund

Bishop Kip Fund for All Saints School

Legal Services for Seniors Endowment Fund

LULAC Council # 2055 Fund

Lyceum Founders' Fund in Memory of Vera Hering and Claire Kennedy

Foundation for Monterey County Free Libraries - General Endowment Fund

Foundation for Monterey County Free Libraries - Dallas Shaffer Book Fund

Monterey County Free Libraries - Staff Development Fund

Meals on Wheels of the Monterey Peninsula Fund

Eve Mills Memorial Fund for Meals on Wheels Salinas Valley

Meals on Wheels of Salinas, Inc. Fund

Monterey History and Art Association Endowment Fund

Monterey Public Library Fund

MPC Women Supporting Women Endowment Fund

Monterey Museum of Art Fund

Monterey County Historical Society Fund

Museum Foundation of Pacific Grove Fund

Natividad Medical Foundation Fund

Danny Nugent Memorial Campership Fund

Ombudsman for Long-Term Care Fund

Operating Endowment Fund of the CFMC

Nellie Irons Orr Scholarship Fund

Pacific Repertory Theatre Endowment

Project Helping Hand Fund

Salinas Rodeo Rotary Club

Foundation Agency Endowment Fund

Friends of the Salvation Army Monterey Peninsula Fund

Shelter Outreach Plus Fund

SPCA of Monterey County Fund

St. Timothy Foundation, Inc. Fund

Sunset Theater Endowment Fund

Sylvia W. Schwarz Endowment for Reading Improvement at Tularcitos School

Robinson Jeffers Tor House Fund

Tularcitos Parent Teacher Organization Fund

Director Emeritus Richard Tyler Scholarship Award

United Way of Monterey County Fund

Ventana Trails Forever Fund

Ventana Wildlife Society Fund

The Western Stage Endowment Fund

Youth in Wilderness Fund

York School Fund

Salinas Rodeo Rotary Club

Foundation Agency Endowment Fund

Friends of the Andy Ausonio Library Stewardship Fund

Big Sur Health Center Stewardship Fund

Big Sur Land Trust Carmel River FREE Stewardship Fund*

Carmel Heritage Society Stewardship Fund

Carmel Woman's Club Stewardship Fund

Stewardship Fund for the Center for Photographic Arts*

Chamber Music Monterey Bay Stewardship Fund

CHISPA Stewardship Fund*

Church in the Forest Stewardship Fund

Community Human Services Stewardship Fund

Carmel Valley Kiwanis Foundation Stewardship Fund

Friends of Carmel Forest Stewardship Fund*

Friends of the Carmel Valley Library Stewardship Fund*

Del Monte Forest Conservancy Fund

Girls Inc. Stewardship Fund

Jacob's Heart Children's Cancer Support Services Stewardship Fund

Japanese American Citizens League of Monterey Peninsula Stewardship Fund

Kernes Adaptive Aquatics Stewardship Fund

LandWatch Monterey County Stewardship Fund

Sun Street Centers' Anne C Leach Scholarship Fund

Legal Services for Seniors Stewardship Fund*

Friends of the Marina Library Stewardship Fund

Meals on Wheels Salinas Valley Stewardship Fund**

Methodist Foundation of Pacific Grove Stewardship Fund

Peace of Mind Dog Rescue Stewardship Fund

Pacific Grove Public Library Foundation Stewardship Fund

Pacific Grove Public Library Foundation Stewardship Fund II*

Pacific Grove Public Library Fund for the Future**

Museum Foundation of Pacific Grove Stewardship Fund

Rancho Cielo Youth Stewardship Fund

Monterey County Rape Crisis Center Stewardship Fund

Learning Opportunities Endowment Fund for Scottish Fiddlers of California

Shelter Outreach Plus Stewardship Fund

Sarah Spencer seed money for the Center for Photographic Art**

Sun Street Centers Stewardship Fund

Salinas Valley Memorial Hospital Foundation Stewardship Fund *

Friends of Sunset Foundation Stewardship Fund**

Temple Beth El Stewardship Fund

United Way Monterey County Stewardship Fund**

Central Coast Veterans Cemetery Foundation Stewardship Fund

Visiting Nurses Association and Hospice Stewardship Fund*

Central Coast VNA and Hospice, Inc. Stewardship Fund

Voices for Children Stewardship Fund

Central Coast Young Men's Christian Association Stewardship Fund

YWCA Monterey County Stewardship Fund

YWCA Monterey County Stewardship Fund

YWCA Monterey County Stewardship Fund

YWCA Monterey County Stewardship Fund

"THE CFMC IS A TRUE PARTNER IN PHILANTHROPY"

- Birt Johnson, Jr.
CFMC board member and
Donor Advised Fund Holder



(l to r) CFMC Development Associate Jan McAlister with fund holders Bradley Zeve and Michael Reid



Company Funds

Businesses simply their giving and receive tax advantages and customized support to maximize their community philanthropy.

The Carmel Realty Foundation

Mission Ranches Fund*

Monterey County Weekly Community Fund
Nepenthe/Phoenix Corporation Fund

Designated Funds

Donors can support a designated agency or agencies over time with a permanent, protected stream of operating income.

William S. and Janice R. Anderson Fund
Arts Council for Monterey County Endowment Fund
Tony P. and Marjorie Ayres Fund
Nancy Parker Benham Endowment Fund
Central Coast Lighthouse Keepers Fund
Cislini Fund
Howard and Lynn Classen Endowment
The Gloria S. Daly Endowment Fund for All Saints' Episcopal Day School
Frances Elgan & Werner Kunkel Fund

Howard W. and Elva M. Elliott Trust Fund*

The Herman Fletcher Fund
A Fork in the Road-A Fund
Providing a Path to a Science Career
John Gill ALS Patient Support Fund
Hester Hyde Griffin Fund for All Saints Day School
Rodney & Betty Guilfoil Fund
The Hudson Fund
Ward D. and Mary T. Ingram Fund
Bob Jones Boy Scout Camping Fund
The William Kiepora Fund
Sandy Loiacono Scholarship Fund
John H. Marble Endowment Fund
Jane P. McKay Endowment Fund for the Big Sur Land Trust Fellowship Program
Jane P. McKay Endowment Fund for Door to Hope
Jane P. McKay Endowment Fund for the Hartnell College Foundation Counselors' Grants Program
Joyce Morris Fund

Monterey County Symphony Association Fund
Margaret L. Musser Restricted Fund
Perry-Downer House Fund
Maud Porter Work Rose Garden Fund
Carl Young Memorial Earth Science Endowment Fund
YWCA Endowment Fund

Donor Advised Funds

Donors recommend grants from their fund to support nonprofit organizations and work with CFMC staff to create a meaningful philanthropic legacy.

Zekai and Carolyn Akcan Fund
Amy Anderson and George Somero Fund
Friends of Community Animal Services Fund
Anonymous Donor Temporary Fund
Rick and Tonya Antle Fund
Ausonio Family Fund

Dan Baldwin and Anne Ylvisaker Fund*

Peggy Downes Baskin Fund for Women's Reentry
Lino and Teri Belli Family Fund
The Benjamin Family Foundation
Marta L. Bennett Fund

Sarah and Robert Bouchier Fund*

Howard Franklin Bowker Numismatic Projects Endowment Fund**

Bright Futures Fund*

The Brown Family Fund
Buccafurni-Lawrence Fund
Buchalter/Adler Family Fund
The Buffett Fund
Chappellet Youth, Arts, and Ecology Fund
Chris's Fund
Scott Corwon Fund
Cynthia Snorf Fund
Andrew & Phyllis D'Arrigo Fund
D'Arrigo-Martin Fund
Eric and Ila Davis Fund
Ila Davis Fund
Dekker Davidson Foundation
Marcia E. DeVoe Fund
DeWitt Fund

Martin and Nancy Dodd Fund*

Helen R. Doe Fund
Doolittle Fund
Jean and Jim Duff Fund
Eimer/Cartwright Fund
Howard and Karin Evans Fund
Davis Factor, Jr. and Christine B. Factor Fund
Farrell/Allen Carmel Rotary Fund

Farrell/Allen/LaSalle Carmel Rotary Fund
Doris Parker Fee Fund
Ted Fehringer Family/Carmel Host Lions Club Fund
Lewis and Gloria Fenton Fund
Jose F. Fernandez Fund
Lori and Lou Flagg Memorial Youth Fund

Fuhs Family Foundation**

Fuqua Family Foundation Fund*

Tom and Mary Kay Gallagher Fund

Gerosin Fund*

Gloria Fund
Jessica Govea-Thorbourne Memorial Fund
Tom Grainger Memorial Fund**
Harlan and Barbara Hall Fund
Dr. Adriana Hayward Fund
The Peter and Jackie Henning Fund
Joseph and Elizabeth Heston Family Foundation
Hicks Fund for the Arts
The Ann Mayer Hiller Memorial Fund
Elmer G. and William G. Hitchcock Fund
Mary and Peter Hobley Memorial Fund

Hodges Family Fund
Jeanne Smith-Holmquist Fund

Chip Hooper Foundation*

Janzen Family Fund*

Birt and Kathleen Johnson, Jr. Fund*

Colburn and Alana Jones Foundation*

Kadushin Robinson Fund
Jack and Patricia Kilmartin Fund
Kobrinisky Evans Family Fund
The Kohn Family Theatre and Arts Fund

Phyllis Geer Krystal Fund

Barbara Paul and Tom LaFaille Fund*

The Landreth Family Fund
James and Susan Lansbury Fund
Jefferson and Frances Larkey Memorial Fund

Lee-Alexander Family Fund

Lehman Family Fund*

Phyllis and Herbert Lister Fund
Valera Whitford Lyles Fund
John and Kristina Magill Fund
Mahoney/Peterson Family Fund
Cambrel B. Marshall Fund**
Cappy Martin/Vernon Hurd

Monterey Rotary Club Fund
McMahan Family Fund
Catherine L. and Robert O. McMahan Fund
Marjorie McNeely Fund for the Blind or Illiterate

FIELD OF INTEREST FUND

Terry Layne Fund for Beach Protection

Colonel Dorothea "Terry" Layne loved Carmel beaches. The windswept landscape, churning waters and rugged beauty prompted the Carmel resident to set up a special field of interest fund, the "Terry Layne Fund for Beach Protection."

The beauty that drew Layne to local beaches, last year attracted 1.1 million people to Point Lobos. The crush of people, long line of cars and off-trail use have caused soil erosion, trampling of native plants, build up of tide pool sediment and a myriad of environmental problems that have impacted its beaches.

Since Layne's passing in 2011, the fund has made grants in her interest area, including \$25,000 to the Point Lobos Foundation for construction of trails and rope barriers to keep visitors contained to bluffs and marked trails.

"This is a bucket-list place, but trails are being eroded at a rate we just can't keep up with," said Stephen Bachman, California State Parks Senior Park and Recreation specialist. "A little thing like signs and barriers goes a long way to get people to stay on trails, and keeps the sediment from ending up on the beaches."

A field of interest fund allows donors to specify charitable areas of interest and the CFMC makes grants to organizations making a difference in those areas. Terry Layne's field of interest fund continues to do vital work on her behalf.

Richard and Grace Merrill Fund*

Lenore and Dale Meyer Fund
Malcolm and Joanne Millard Fund
James I. and Barbara S. Miller
Charitable Fund**

Mills Family Fund
Howard and Anne Morgens Fund
Monterey Peninsula Sunrise
Rotary Club Fund

Anthony and Lary Lynn Muller
Fund

Neidel Family Fund**

Gilbert M. Neill Math Fund

Nonella Family Fund

Non-Point Source Projects Fund

Don Nucci Fund for the Salinas
Valley

F. Robert Nunes Family Fund

Oak Hill Charitable Fund

Mike and Mary Orradre Fund

Pagnillo Family Fund*

Nicholas M. Pasculli Fund*

Reese Family Fund

**Rotary Club of Monterey,
Cannery Row Fund***

The Fred Rowden Memorial Fund
RSH Fund

Tom and Carol Russell Family Fund

Salinas Rodeo Rotary Club Fund

Salinas Rotary Club Fund

Fund for the Salinas Valley

The James M. Shade Memorial
Fund

Will and Mary Shaw Fund

Shelley Family Fund**

Ramsey Shirk Fund

Laura Sinks Fund*

The Snorf Fund

Salinas Steinbeck Rotary Club

Fund

Robert and Leslie Taylor Fund

Gary and Emma Taylor Fund*

The Fred Terman and Nan

Borreson Fund

Peter and Anne Thorp Fund

Trinidad Gomez Family Fund

Tyler Visiting Fellowship in

Residence Fund

William H. and Susanne S. Tyler
Pathway Fund

Dr. James Valentine Fund*

Vallentin Fund*

Mark R. Wendland Memorial Fund

Ben and Mary Ann Whitten Fund**

Wiegand Family Foundation

Wilmsen Family Fund

Wold Family Fund**

Marsha McMahan Zelus Fund*

Field of Interest Funds

*Donors specify a charitable
area of interest and the CFMC
awards grants to local nonprofit
organizations.*

Ruth L. and Wilbur K. Amonette
Fund

The Todd Lueders Fund for the Arts

Paul Block, Jr. Fund

Patricia J. Boles Fund

Maureen Bradford Fund

Stephen and Madeleine Conran
Fund

The John & Mary Dawson
Learning Fund

Thomas Doud, Sr. and Anita M.
Doud Fund

Ken and Gundy DuVall Fund

Fund for the Environment

Fred Farr Environmental

Stewardship Fund

Jean P. Fitton Fund**

Rudy E. Futer Fund for Human &
Humane Needs

Good Neighbor Basic Human
Needs Fund

Gumm Fund for the Performing
Arts

Elmer Mills Harris Fund

Douglas Madsen Fund for HIV/
AIDS Housing in Monterey
County

The Fund for Homeless Women

Non-Endowed Fund

The Fund for Homeless Women

Terry Layne Fund for Beach

Protection

Literacy Campaign Fund

Kathleen and Howard Marks Fund

The McKay Fund

MPUSD Fund for the Arts

Engracia Irene Murray Field of

Interest Fund

Margaret L. Musser Field of

Interest Fund

Andrew D. and Marjorie S. Orrick
Fund

Out Reach - A Fund for LGBT Life
in Monterey County

**June P. Sheppard Fund for the
Performing Arts***

Siembra Latinos Fund**

Dr. Frank Pye Smith Medical

Facilities Fund

Katherine Curtis Springer

Fibromyalgia and Chronic

Fatigue Syndrome Patient

Support Fund

Robert and Virginia Stanton

Endowment Fund

Irving R. and Helen G. Stuart Fund

The James M. and Marjorie E.

Sturgeon Fund

Shirley I. Thackara Fund*

Evelyn and Spencer Thompson

Fund to Help Feed the Hungry

Dr. George & Sam Kih Thorngate

Family Fund

Tri-Counties Blood Bank Fund

Anita Tarr Turk Fund for Breast

Cancer Research

Women's Fund Endowment

Youth Fund

General Endowment Funds

*These funds provide philanthropic
resources for CFMC community
grantmaking.*

Fund for the 21st Century

Kathleen and Austin Barrows Fund

Wendy (Millard) Benjamin Fund

Mary Jane Drummond Fund

Neighborhood Grants Program

Fund

General Endowment Fund of the

Community Foundation

Marilyn & Philo Holland Fund

Lauralie and J. Irvine Fund

George P. and Betty Kendall

Memorial Fund

Leo Lanini Fund

The Barbara and Joseph Lee Fund

The John and Nancy Love Fund

John R. Marron Fund

Opportunity Fund of the CFMC

Paul Edward and Gay Delores

Rochester Fund*

The Donna Roop Endowment Fund

The Scott Fund

Clyn & Pamela Smith Fund*

Evelyn Torras Fund*

CFMC Trustees Fund

Private Foundation Funds

*These funds offer a customized
blend of administrative support plus
tax advantages, increased flexibility
and personalized philanthropic
services.*

The Joel and Dena Gambord

Charitable Foundation

The Morse Foundation

Stewardship Fund

The David and Lucile Packard

Foundation Fund

S.T.A.R. Foundation of Monterey

County Stewardship Fund

Robert N. & Florence Slinger

Foundation Fund

The Alexander F. Victor Foundation

Scholarship & Award Funds

*Donors invest in the future of local
students with the help of CFMC
staff.*

Monica Abbott Scholarship Fund

ALA Monterey Bay Concepts

Competition Fund

Dr. William D. Barr Scholarship

Fund for Excellence in

Educational Leadership

Dr. Roger and Kate Bartels

Memorial Scholarship Fund

Big Sur Fiddle Camp Scholarship

Fund**

The Bissell Fund

James Bliss & Annette Sward

Forestry & Nursing Scholarship

Fund

Margaret and Seba Bronson

Scholarship Fund

Carol C. W. Butterfield Bacon

Scholarship Fund

The Larry Horan-Jim Langley Cal

Alumni Memorial Scholarship

Fund

Jack Van Zander Cal Alumni

Memorial Scholarship Fund*

California Polytechnic State

University Agriculture Business

Department Endowment Fund

Carmel High School Class of 1952

Fund

CHISPA Scholarship Fund*

Church Brothers-True Leaf

Farms Scholarship Fund*

Bill Clapper Memorial Music

Scholarship Fund

College Futures Monterey

County Fund*

Raymond H. Costa Family

Scholarship Fund*

The Nancy Wheelis Dodd Fund

Drezner Family Scholarship Fund**

The Elkhorn Slough Foundation's

James Rote & Les Strnad

Scholarship Fund

David L. Ferguson Scholarship

Fund

Matthew Paul Finnigan Memorial

Scholarship Fund

Flagg Scholarship Holding Fund

Joel and Dena Gambord Nursing

Scholarship**

Girls' Health in Girls' Hands

Scholarship Fund*

The Allen S. Griffin Fund

Geraldyn R. Griffith Memorial

Scholarship Fund

Hausdorf Family Scholarship Fund

Bonnie Hutcheon Scholarship

Fund*

Harold and Peggy Ipson

and Dan and Sue Ipson

Scholarship Fund*

Kier Memorial Scholarship Fund

Howard and Gretchen Leach

Scholarship Fund

The Morse Foundation

Scholarship Fund

Robert Hattori Nakamura

Memorial Scholarship Fund

Anthony Nicholas Narigi Memorial

Baseball Endowment

Libby Olver Scholarship Fund*

Dr. Gladys M. Olvis Scholarship

Fund

Kristopher Pallastri Fund

Richard Scott Reynolds Science

and Technology Education

Scholarship Fund

San Ardo Foundation for Education

Theodore R. Sarbin Research and

Scholarship Award Fund

The Harles R. Sarment College

Endowment

Alan and Rita Shugart Scholarship

Fund

Joseph and Betty Spradling

Scholarship Fund

Robert Stanton Award Fund

Rotary Club of Monterey Martin/

Hurd Scholarship Fund**

Wilbur H. and Maxine D. Stevens

Scholarship Fund

Hugo and Dolores Tottino

Family Scholarship Fund*

Charles Joseph Watts Scholarship

Fund

Shelley Watts Scholarship Fund

Horace H. Wilson Scholarship Fund

Special Purpose Funds

*These funds are established for
specific projects or initiatives with a
limited time frame.*

Alert Monterey County Fund

Big Sur Relief Fund**

Center for Nonprofit Excellence

Central Coast Veterans Cemetery

Foundation

College Futures Foundation

Fund*

Community Leadership Project

King City Recreation

Commission Forde Park

Playground Fund*

Rudolph E. Futer Restricted

Purpose Fund

Gathering for Women Capital

Campaign*

Girls Health Initiative

Friends of Laguna Seca Capital

Campaign*

Monterey County Development

Professionals Fund**

The Monterey Experience Project

Fund

Pathways to Safety

Soberanes Fire Fund*

Tassajara Fire Fund

***New Fund Created in 2016**

**** New Fund Created in 2017**

WHAT OUR DONORS SAY



"Monterey County is very fortunate to have an organization like the CFMC. We appreciate their expertise and countywide focus. We know they will watch over our gifts so they will achieve our goals in the future."

– Mike & Mary Orradre (II)
Donor Advised Fund Holders, Legacy Society Members

"Our decision to be Legacy Society members was based on our knowledge of many years of outstanding work by the CFMC in supporting the charities of Monterey County. We are confident that our endowment will be used wisely and in a responsible manner on behalf of local charities. We are very proud to be a part of this wonderful organization."

– Bob & Millie House (r), Legacy Society Members



"The Community Foundation has consistently demonstrated integrity and competence. We have found the CFMC a wonderful place to establish a philanthropic legacy."

– David & Laurie Benjamin (I)
Donor Advised Fund Holders, Legacy Society Members



"We first looked into establishing a family foundation. Instead, we choose a donor advised fund in which our daughters are co-advisors. It provides an ideal solution without any administrative burden. It helps us plan for ongoing giving and offered additional tax benefits, since we were able to contribute highly appreciated assets."

– Bill & Emmy Reese (r)
Donor Advised Fund Holders



THANK YOU TO OUR 2016 CONTRIBUTORS

1984 Fund

Del Monte Forest Conservancy
Monica Abbott Scholarship Fund

Jonathan Bourne
Robert Flynn
Chris Hoffner
Melissa Pettit
Crystal A. Stevens

Alzheimer's Association of Monterey County

Lisa Boggs
Sharon Bradford
Susan Hunter
Alan and Lorin Litner
Robert Shelby
Gustavo Zuniga
In Memory of Marybeth Alaga
Karen Patriquin
In Memory of David G. Chartier
Denise Dorcey
Vicki Reinhard
Paul and Lisa Rutherford

Amy Anderson and George Somero Fund

George Somero and
Amy Anderson

The Todd Lueders Fund for the Arts

William and Nancy Doolittle
Todd and Kathy Lueders
Thomas E. and
Sherrie McCullough
Lee and Shirley Rosen

In Honor of Todd Lueders

Frank and Barbara Keith

Dan Baldwin and Anne Ylvisaker Fund

Daniel R. Baldwin and
Anne Ylvisaker

Roger and Kate Bartels Memorial Scholarship Fund

Ingrid V. Bartels

Lino and Teri Belli Family Fund

Lino, Jr. and Teri Belli

Wendy (Millard) Benjamin Fund

Estate of Wendy Benjamin

Big Sur Health Center Endowment Fund

Big Sur Health Center

Big Sur Health Center Stewardship Fund

Big Sur Health Center

Big Sur Land Trust Carmel River FREE Stewardship Fund

Big Sur Land Trust

DeWitt Fund of the CFMC

The Big Sur Land Trust Conservation Fund

Mack Ray

Sarah and Robert Bouchier Fund

Robert L. and Sarah G. Bouchier

Bright Futures Fund

United Way Monterey County

Buchalter/Adler Family Fund

Betsy Buchalter Adler and
Barry Adler

The Buffett Fund

David and Roberta B. Elliott

The Larry Horan-Jim Langley Cal Alumni Memorial Scholarship Fund

Patricia Bernardi
Dan C. Boger
Janet Brennan
Paul Brocchini
Jeffrey and Lucy Campen
Alexander C. Crosby
Brian S. and Betty A. Cureton
John and Nancy Durein
Stephen W. Dyer and
Cynthia Martin Dyer

Jean H. Engvall

Joseph and Cynthia Hertlein

Elizabeth H. Hibbard

Jean Horan

Jay and Kip Hudson

Michael and Gloria Ipson

James L. and Louetta Langley

Douglas C. Lee

Francis P. and Mary Anne Lloyd

John and Ann Mahoney

Albert and Gayle Maldonado

Dennis R. and Susan Mar

Milton A. Marquard, Jr.

William C. McClintock

Daniel McNamara

Patrick and Dorothy Micheletti

Edwin R. and

Katherine M. Munsey

Robert and Ann Nelson

Luke and Victoria Phillips

Burton Pike

Wade H. Reese

Richard Rhodes

Richard K. and Sally Rhodes

Glen L. Ryland

Whitney Shane and Clasia Shane

Elisabeth Y. Snow

Ed J. Stellingsma

Edward Stoddard, DDS

Joanne Taylor Johnson

Madeline Van Zander

Allan C. Vannoy

Carol Voss

George Russell Wiley

Carl Cherry Center for the Arts Fund

James and Susan Greene

Friends of Carmel Forest Stewardship Fund

Friends of Carmel Forest

Carmel High School Class of 1952 Fund

Anonymous

Barry and Cathleen Hammer

Tom and Lisa Hoivik

Michael E. and Marion McPherson

Franklin Zane Morehead

William and Susan Morris

Gilbert M. Neill and Rod Woodard

Paula A. Roloff

Janet C. Shaw

Christian K. and

Dinah R. Van Peski

Jane L. Weisser

In Memory of Jim Thompson

Beverly A. Freeman

The Carmel Realty Foundation

Carmel Realty Brokerage

Services

Carmel Realty Company

Carmel Valley Kiwanis Foundation Stewardship Fund

Carmel Valley Kiwanis

Foundation

Friends of the Carmel Valley Library Fund

John Archer

Friends of the Carmel Valley

Library

Jennifer Smith and

Douglas Holtzman

Friends of the Carmel Valley Library Stewardship Fund

Friends of the Carmel Valley

Library

In Honor of Doug Pease

Karin Strasser-Kauffman

Casa Amesti Foundation Building Endowment Fund

Peter K. and Incy Brooks

Matthew A. and Joan Little

Stephen and Betsey Pearson

Clyn & Pamela Smith Fund

of the CFMC

Casa Amesti Garden and House Fund

Robert B. Sheppard

Stewardship Fund for the Center for Photographic Arts

Sarah Patterson Spencer

Center for Nonprofit Excellence

The David and

Lucile Packard Foundation

Central Coast Veterans Cemetery Foundation Stewardship Fund

Andrew and Phyllis D'Arrigo

Charitable Foundation

Carmel Gun Club

Marilyn B. Holzer

Stephanie Munoz

Northwestern University

Office of the Provost

Pebble Beach Company

Foundation

Elmer and Robin Valentine

In Honor of Retired SFC

Ronald F. Robertson

The Grogan Group, LLC.

In Memory of Roger and

Muriel Erickson

Anonymous

In Memory of

Kenneth Aldwin Himes

Carolyn Donaway

Kathryn Boyer

Margaret Himes

Martha Forester

R. Brickley Sweet

Darold Rianda

In Memory of Ret. E8

Kenneth A. Himes

Truman W. and Miram V. Mull

In Memory of Edward Sousa

John Giusti

Central Coast VNA and Hospice, Inc. Stewardship Fund

Cyd Love

CHISPA Scholarship Fund

Anonymous

CHISPA

Pebble Beach Company

Foundation

CHISPA Stewardship Fund

CHISPA

Chris's Fund

Todd H. and Linda Norgaard

Church Brothers-True Leaf Farms Scholarship Fund

Church Brothers, LLC

Jonathan Fanoe

True Leaf Farms, LLC

Church in the Forest Stewardship Fund

Church in the Forest

Bill Clapper Memorial Music Scholarship Fund

Mary J. Clapper

Colleagues of the Arts Endowment Fund

Colleagues of the Arts

College Futures Monterey County Fund

College Futures Foundation

Vallentin Fund of the CFMC

Raymond H. Costa Family Scholarship Fund

Raymond Costa

D'Arrigo-Martin Fund

Margaret D'Arrigo-Martin

and Steve Martin

Eric and Ila Davis Fund

Eric Davis

Ila Davis

The John & Mary Dawson Learning Fund

Mary B. Dawson Living Trust

Del Monte Forest Conservancy Fund

Del Monte Forest Conservancy

Pebble Beach Company

DeWitt Fund

Anonymous

Martin and Nancy Dodd Fund

Anonymous

Peter T. Hoss

Susan Merrill

Robert Seldomridge

In Memory of Martin and

Nancy Dodd

Pete and Anne DiFlippo

John and Claudia Hirasuna

Spencer and Dee Ette R. Myers

In Memory of Martin Dodd, Jr.

Henry A. and

Patricia T. Brown

Lucien and Marie Hope

Siegfried and

Kay Magenheimer

Miriam Schustack

Frank and Louise Ring

Philanthropic Fund of

the Jewish Communal

Fund

Rachel Towbin

The Nancy Wheelis Dodd Fund

Allen S. Taylor Foundation

Martin Dodd

Joshua and Elizabeth Ring

David and Adele Stotler

Doolittle Fund

Bill and Melinda Gates

Foundation Matching

Gifts Program

William and Nancy Doolittle

Shelby E. Wilson

Thomas H. and Elinor H. Wilson

The Elkhorn Slough Foundation's James Rote & Les Strnad Scholarship Fund

Elkhorn Slough Foundation

Howard W. and Elva M. Elliott Trust

Howard W. and Elva M. Elliott

Fund for the Environment

William and Nancy Doolittle

Arthur W. Haseltine

Mary Ann Matthews

Janet L. Shing

Fred Farr & Edwin Bliss

Buckeye Memorial Fund

The Ancient & Honorable

Society of Buckeye

Stephen W. Dyer and

Cynthia Martin Dyer

James Ringrose III

Farrell/Allen Carmel Rotary Fund

Deanna Adolph

James Agan

Albert Alvarez

Phil Arnold

Tom Atherton

Reed Bartron

Brian Congleton

Joan DeMers

Bill Doolittle

Nick Fantl

Bruce Frank

Siobhan Greene

Liza Horvath

Carl Iverson

Richard Kehoe

Gregory Kraft

Matthew Little

Richardson Masten

Sam McLeod

Beccie Michael

Jim Miller

Richard Nystrom

Thomas Olivola

Monta Potter

Merv Sutton

Jerry Traynor

Terry Trotter

Bill Tyler

Harley D. Warner and

Clarissa Morton Warner

Lucy Willman

Chips Wood

Doris Parker Fee Fund

Carl E. Davis

Ken and Mary Wright

<

Borzini Accounting & Consulting, LLP
 Marvin and Grace Borzini
 Jerry and Paulette Bumbalough
 John and Janet Buttgerreit
 Diane Camarillo
 Lise Carter
 Leo and Evelyn Casa
 Bill and Holly Casey
 Peggy Casey
 Nita B. Caulk
 Eutiquio and Sonia Chapa
 Simon Chavera and Cynthia Singh
 Phoebe Cheney
 Ronald and Susan Childers
 Clark's Storeroom
 Jon and Sarah Conatser
 David and Julie Croy
 Robert Cullen Insurance Agency
 David L. and Mary Daines
 Chris and Kathy Davis
 Mario A. Diaz
 Richard and Janette Domingos
 Rita and Luis Echenique
 Charitable Foundation
 Geneva M. Eddington
 Margaret Eddington
 Enjay, Inc.
 Floyd Owens, Inc.
 Fresh Foods, Inc.
 Patricia J. Frudden
 Funds for Forden
 Robert and Adele Gauer
 Alice Gaunt
 David and Susan Gill
 Frank and Leslie Girard
 William and Marianne Gittler
 Francis and Becky Giudici
 James and Adriana Giudici
 Green's Accounting
 Steven and Cheryl Harrison
 Alice Haskins
 Bea Hayes
 Katie Hearne
 Tim and Kate Hearne
 Synthia Hicks
 James and Sherie Hinkle
 Holaday Seed Company, Inc.
 Nathan M. and Cindy Holaday
 Michael S. and Julie A. Hood
 Allen A. and Caren Hook
 Gregory T. and Mary Hughes
 Ricky Humphreys and Sharlene Hughes
 Joseph S. and Karen Iwan
 John and Karen Jernigan
 Gregg Johnsen
 Keefer's Inn
 Matthew and Nancy Kelley
 King City Glass
 King City Pizza
 King City Rotary Foundation
 King City True Value Hardware
 King City Valley Bears
 Douglas G., Jr. and Veva King
 Clifford and Pamela Kirkpatrick
 Edward J. and Susan Kleber
 Kenneth and Marilee Kline
 Charles and Esther Kosty
 Charles A. and Suzanne Krause

Krehbiel Automotive
 Robert and Michelle Krehbiel
 L.A. Hearne Company
 Spencer and Marisela Larson
 Stephen Lee and Lexenn Latasa
 Butch and Vivien Lindley
 Donna M. Lisk-Jefferson
 Lynn's Liquors
 Robert Mackin
 Robert A. and Rita Martin
 Robert McCoy
 Edwin and Anita McKean
 Ernest and Jennell Medina
 Lynn E. and Mikel Ann Miller
 M-K-S Dodson Inc.
 Monterey County Dance Foundation
 Richard and Beverly Morgantini
 Roy F. and Carole E. Morris
 Edward L. and Cinda R. Muzykowski
 Donna L. Myers
 John and Deborah Norman
 David and Janene Norum
 Kathryn A. Nunez
 Oak Shores Realty
 Lynette Oliveira
 Jim Orradre
 Matthew and Dawn Owens
 Kristen Pantaleon
 David N. and Karen Park
 Carlos H. Partida
 John and Barbara Pekema
 Daniel Nunes Pereira and Bernarda Lali Pereira
 Linda G. Perez
 Carol Perkins
 Mark and Christine Phillips
 David M. Phillips, DDS
 Katelin A. Phillips
 T. J. Plew
 Patricia J. Pope and Laurel E. Slaten
 Gregory C. Pozzi and Ileen Mc Caig
 Eugene L. Richardson
 Ronald and Virginia Riehl
 Rio Farms, LLC
 John and Annette Romans
 Theresa Rouse
 Joseph and Jacquie Sabala
 Manuel S. Sanchez
 James and Patricia Schierer
 Nessen Schmidt
 Brandi Schmidt-Garza and Michael Garza
 Burton and Cheryl Silva
 Cesar T. and Lilliana S. Silva
 Danny and Linda Silveira
 Joe and Shirley Silveira
 Tiffany L. Singh
 Daymond R. and Laurel E. Slaten
 Paul and Robin Slocum
 SO MO CO Community Theater Inc.
 Ruth Anne Sonniksen
 Southern Monterey County Republican Women Federated
 Janette M. Sowash

Robert and Antonia Tamez
 Kimberly K. Tankersley
 Scott and Jennifer Taylor
 William Taylor
 Tire King & Auto Express
 Thomas and Joanne Tisdell
 Daniel L. Todd and Monique C. Creamer-Todd
 Loretta J. Tognetti
 Elida Torres
 Michael and Laura Tucker
 Buck Tugel
 Allen and Teri Umbarger
 Aaron and Desiree Vanoli
 Jose Trinidad and Maria Guadalupe Velasco
 Joe and Beatrice Velo
 Damon and Andrea Wasson
 Wild Oak Ag Design
 Hans C. and Kelly L. Wittstrom
 David A. and Linda A. Wright
 Cassie Young
 George B. and Angela Young
 Richard and Mary Lou Zechentmayer
Friends of the Foundation, Annual Appeal
 Anonymous
 Rick and Tonya Antle Fund of the CFMC
 Applewood Fund of the Community Foundation of Santa Cruz County
 Ausonio Family Fund of the CFMC
 Dan Baldwin and Anne Ylvisaker Fund of the CFMC
 Bank of America Charitable Foundation Matching Gifts
 Brian and Sandra Berris
 Robert and Crystel Bianchi
 Big Sur River Inn
 Richard J. and Judy Borda
 Merritt and Stephanie Bruce
 Buchalter/Adler Family Fund of the CFMC
 Robert C. and Kalah Bumba
 Josephine M. Bunn
 Patricia Burkoff
 Lewis and Sally Ann Cantor
 John W. and Alice Carley
 Katherine M. Coopman and Joyce Blevins
 Spencer and Lila Critchley
 Wayne and Jennifer Dalton
 Stephen Dart and Iris Rainer
 Norma H. Davis
 David G. and Jill Fanucchi
 Hugo J. and Karen Ferlito
 Lowel I. Figen
 Cyrus and Jean Fitton
 Richard and Cynthia Guthrie
 Reuben and Tamara Harris
 Arthur W. Haseltine
 Jeffrey and Janice Hawkins
 Bernice Hearn
 John S. Hedgcock
 Otto and Grete Heinz
 Eva E. Hendricks

The Peter and Jackie Henning Fund of the CFMC
 Nathan Holthouser
 Peter T. Hoss
 Bannus and Cecily Hudson
 Jay and Kip Hudson
 Michael J. Jones and DeeAnn Thompson
 Gretchen Jordan
 Kuffner Family Foundation at Fidelity Charitable
 Gary and Sally Kuhn
 John LaLonde
 The Landreth Family Fund of the CFMC
 Paul L. Lapidus and Lindsae Marshall
 Gifford and Pam Lehman
 David Leiken
 Barbara P. Lipman
 Todd and Kathy Lueders
 John and Ann Mahoney
 Mahoney/Peterson Family Fund of the CFMC
 Roger and Carolann Manley
 Family Gift Fund at Fidelity Charitable
 Joseph A. and Sheila Mark
 Daniel Maschmeier
 Thomas E. and Sherrie McCullough
 Steve and Marie McGowan
 Michael and Neal McMahan
 Merrill Lynch
 Fred E. and Phyllis Meurer
 Anthony and Lary Lynn Muller Fund of the CFMC
 Arvid and Ann Myhre
 Tom Nunes, Sr. and Nancy Koster
 Charles T. Olvis and Miranda S. Morris
 Janna L. Ottman
 Charles and Linda Page
 Nicolas Papadakis
 Stephen and Betsey Pearson
 Ken and Rita Petersen
 Russell E. Planitzer and Barrie Fiske Fund at Fidelity Charitable
 Anna Marie Ponce
 Rahin Ravanbakhsh
 Reese Family Fund of the CFMC
 Lawrence and Ruth Rosen
 RSH Fund of the CFMC
 Glen L. Ryland
 Gloria Saisho
 William F. and Kathryn Sharpe
 Mathew Simis
 Robert and Florence Slinger
 Fund of the CFMC
 Paul B. and Margaret Ann Smith
 James and Bette Sommerville
 Gloria Souza and Sandi Borthwick
 Florence T. Speck
 David and Maryanne Spradling

Jean Stallings
 Mark and Mary Starr
 Martin Sternstein
 Barbara L. Stokely
 Stephen Storey Charitable Fund at Schwab Charitable Fund
 Synopsis Employee Engagement Fund of the Silicon Valley Community Foundation
 Daniel M. Tellep
 Tides Center at the Tides Foundation
 James R. Valentine
 Vallentin Fund of the CFMC
 The Alexander F. Victor Foundation of the CFMC
 Virginia Weathers
 Jackie Wendland
 Wily Family Trust at Fidelity Charitable
 Hope D. Williams
 R. A. Williams
 Marvin J. and Karla Wolf
 Ken and Mary Wright
 David and Judi Zaches
 Marsha McMahan Zelus
 Fund of the CFMC
 Florence Zeve
In Honor of Dan Baldwin
 Roderick L. and Suzanne Dewar
In Honor of Jeff Bryant
 Erin Bryant
In Honor of Wolfgang Haas
 Robert Haas
In Honor of Ken & Mary Wright
 Joanne Nissen
In Memory of Martin Dodd, Jr.
 Frank and Louise Ring
 Philanthropic Fund of the Jewish Communal Fund
In Memory of James B. Foster
 Nancy Foster
In Memory of Chip Hooper
 Amanda Ilgunas
Fuqua Family Foundation Fund
 James and Renee Fuqua
Rudy E. Futer Fund for Human & Humane Needs
 Estate of Rudy Futer
The Joel and Dena Gambord Charitable Foundation
 Joel and Dena Gambord
 Joel Gambord Investments
Gathering for Women Capital Campaign
 Anonymous
 Richard and Elizabeth Moley
 Michael E. Reid and Bill Robnett
 The Schacher Family Trust
 Gordon E. Schacher
 Vallentin Fund of the CFMC
In Honor of Michael Reid
 David S. Sabih and Anna Swartley

(l to r) Willie Chan, CFMC board member
 Ida Lopez Chan and Anne Leach



(m) Bicycle safety training from Ecology Action
 (r) Stanford Alumni Consulting Team



Vicki and Bill Mitchell and Carmel Realty Company partner with the CFMC to give back

Scott Campbell

"Our company has always had a focus on philanthropy. We're excited to take it to the next level through our partnership with the Community Foundation."

— Bill and Vicki Mitchell

COMPANY FUNDS

Carmel Realty Foundation

Now in its fourth generation in local real estate, the Mitchell Family, co-owners, have made giving back a key component of their company's culture.

"We have a strong foundational belief that you share your success and give back to the local community that has given you so much," says Bill Mitchell, co-owner, Carmel Realty Company and CFMC board member.

The company partnered with the CFMC to establish the Carmel Realty Foundation, a company donor advised fund to streamline their giving. "Rather than the expense and burden of a private foundation, it allowed us to simplify what we were already doing. It's even increased our giving since it's made it so much easier," noted Bill.

CRC also builds on their employees' generosity through a matching gifts program which the CFMC administers. In 2016 they made grants to the Soberanes Fire Fund, in addition to supporting youth, arts, health and other areas.

 www.cfmco.org/companyfunds

General Endowment Fund of the Community Foundation

Anonymous (2)
Suzanne Baldwin
Eric and Marilyn Barr
Richard J. and Judy Borda
Peter K. and Incy Brooks
Barbara B. Bucquet
John W. and Alice Carley
Claire Giannini Fund
Arthur Cook
Mark and Marilyn Dorman
Estate of Mrs. Robert Stanton

Lowell I. Figen
Douglas and
Renee Garrison
Arthur W. Haseltine
John S. Hedgcock
Robert A. and
Petie Helfrich
Alice Heyman
David G. Huey and
Carla Hudson
Greg and Teresa Kraft
Lloyd W., Jr. and
Carol Lowrey
Rich and Jane Lundy
Joseph A. and
Sheila Mark
Dan McGilloway, Sr.
Carol A. Meyer
Tom and Frances Mill
Juliette Mistral
Martha Morgenrath
Arvid and Ann Myhre
Janna L. Ottman
William N. Reno
Raul and Ana Rodriguez
Todd and Suzanne Schmidt
Mathew Simis
Laura M. Solorio
Gloria Souza and
Sandi Borthwick
Jane A. Stile
Robert F. and
Rosemary Tintle
Mary Ann L. Vasconsellos
William and
Kathleen Wojtkowski
Marvin J. and Karla Wolf

In Honor of Stephen Davis
The Environmental
Quality Organization,
LLC

In Memory of Chip Hooper
Amanda Ilgunas

In Memory of Eric Miller
Sue Miller

In Memory of Andrei Pashin
Sara Pashin

Gerosin Fund

Daniel M. and
Margaret C. Gerosin

Girls' Health in Girls' Hands Scholarship Fund

Anonymous (10)
Carol Adams
Mary Adams
Sam and Laura Alladeen
Jessica Allen
Sandy Amaral
Leonard Anable through
the UBS Employee
Giving Program
Ann Appel
Paula Arnold
Nancy B. Ausonio
Arthur and
Barbara Babcock
Daniel R. Baldwin and
Anne Ylvisaker
JuneAnn Barnes
Helena Beckett
Shelley Bennett
Donald and Lani Bethé

Bert T. and
Karen E. Boothroyd
Robert L. and
Sarah G. Bouchier
William and Susan Breen
Jay Earl and Ann Brown
Virdette Brumm
Cynthia Burnham
Linda Calaflore
Brian D. Call
Karen Campbell
Katy Castagna and
Gary Ray
Greg and Liz Chilton
Kate Chilton
Lavonne B. Chin
Heather Church
Erin Clark
Lauren Cohen
Karen Curtis
Erik and Kristin Cushman
Katharine Daniels Kurz
and Daniel R. Kurz
Margaret D'Arrigo-Martin
and Steve Martin
Barbara Davi
Barbara Davidge
Julie Davis
Helen De Young
Kristin DeMaria
Elaine Dotseth
Heather Downs
Marilynn Dunn Gustafson
Rhonda Dunn
Jeraline Edwards
Janet Elarmo
Howard and Karin Evans
Fund of the CFMC

Jayne Fields
Erin Fogg
Anna Foglia
Kenneth C. Schley and
Susan Freeland
Judy Furman
Susan Galvin and
Michael A. Leavy
James L. and Jeri Gattis
Philip Geiger and
Lisa Crawford Watson
Elmer and Sheryl Gica
Lina Gomez
Molly C. Goshorn
Yessica Grandelli
Stephan S. and
Mary S. Gunn
Linda Hanger
Krista Hanni and
Scott Davis
Jody Hansen
Caroline Haskell
Shari R. Hasteley
The Peter and Jackie
Henning Fund of the
CFMC

Mirna Hills
Patti Hiramoto and
Wayne Komure
Matthew P. and
Sun Shine Hohman
Mary Ann Hooker
Jay and Kip Hudson
Erin E. Hunter
Kristen Huston
Larry Imwalle
Joy Jacobs
Camille Jaque
Debbie Jett
Birt, Jr. and
Kathleen Johnson
Jessica Johnson
Michael J. Jones and
DeeAnn Thompson
Denise Kaku
Shyam J. and
Kiran S. Kamath
Kelli Keane
Rick and Martha Kennifer
Mary E. Kiniry

Carol Kolb, CPA
Charles I. and
Deborah Kosmont
Greg and Teresa Kraft
Arlene Krebs
Kristi Lau
Mary Ann Leffel
Elizabeth Leitinger
Andrea Lewis and
Jeff Fuller
Ida Lopez Chan
Jesse Lopez
Jean Lovell
Linda Maceira
Mike and Tobi Marcus
Carla R. Martinez and
Andrew G. Peterson
Megan Mayer
Diana B. McColl
Laurel McCombs
Linda McGlone
Kristi McLaughlin
Matthew Mehle and
Katherine Mitchell Mehle
Robert J. and
Marli Melton
Lynn Merrill Paduck
Brian R. and Sheryl Merrill
Lynn E. and
Mikel Ann Miller
Zephyr Miller
William W. Monning and
Dana T. Kent
Alysia Morales and
Luis Hernandez
Penny Morris
Clare Mounteer
Konny Murray and
David Buckingham
Nancy Buck Ransom
Foundation
Scott and Kimberly Negri
Tina S. Nova
Esmeralda Owen
James and Carrie Panetta
Susan Pauly
Sharilyn R. Payne
Pebble Beach Company
Foundation
Laurie Pike
Elizabeth Pintaric
Susie Polnaszek
Carmen Ponce
Monta M. Potter and
Cynthia L. Vernon
Jennifer Ramirez-Dalton
Kathleen V. Rankin
Meryl Deyoung Rasmussen
Suzanne Rinnhofer
Judith Ritchie
Kathie Ritter
Gary and Robin Rodriguez
Julie Rogers Slocum
Tanja Roos
Andrea Rosenberg
James and Anne Rurka
Elias Salameh
Tina Satow
Ernest and Selby Scalberg
Nancy Scheid
Sarah Scheldwacht
Jaime Schrabek and
Joel Johnson
Mary H. Schradly
Claus H. Shelling and
Allison Pratt Shelling
Katherine Sigala
John E. Silva and
Natalie Lujan-Silva
Brooke Silveria
Mary Jane Sligar
Rosamaria Y. Soto
Sue Storm
Kay F. Sullivan
Randi Sunshine
Suzanne Taunt
Amanda Thompson
Carol Tisson

Traci Townsend-Gieg
Marlene Trotter-Murray
Carrie Ushiba
Wesley Van Camp
Inga Waite and
Robert Smith
Wendy Walker
Arlene T. Wall
Kathleen M. Wall
Elizabeth Welden-Smith
Jennifer Williams
Elizabeth Winchester
Kimberly J. Wolff
Helen C. Yamashita
S. LaNette Zimmerman
In Honor of

Betsy Buchalter Adler
Charles S. and
Susan B. Franklin
*In Honor of Alondra for being
an outstanding role model
for you girls, especially
our community's Hispanic
girls. I'm so proud of you!*
Love Sharen
Sharen Carey and
Hal Latta

In Honor of Tonya Antle
James A. and
Bridget Booth
Carina Cristofalo
Charlotte N. Eyerman
Lori Rosenblum

In Memory of
Albina Ostarello Boggiatto
Michael E. and
Lucia Boggiatto

In Honor of Kevin Cartwright
Michele Melicia-Young

*In Honor of my grandmother,
Dola Cumberland*
Michelle Slade

In Honor of Karen Curtis
Stanley and
Susie Brusa

In Honor of Mary Goblirsch
Rob and Kathleen Lee
In Honor of my mother,

Terry Gonzales
Laurice Rubalcava

*In Honor of my daughters,
Leila and Kaylee Gross*
Melissa A. Gross

*In Honor of Craig Johnson,
past president*
Christine Johnson

*In Honor of Junior League of
Monterey County 2016-
2017 Board of Directors*
Nicole Kaufman

In Honor of
Dr. Jennifer Lewallen
Will and
Michele Lewallen

In Honor of Jane McCoy
Robin Venuti and
Joseph Rock

In Honor of Kayla Otteson
Karen DeWitt

*In Honor of Ela, Cate and
Petra*
Cristofer and
Shelley Cabanillas

In Honor of Rachel
David and Sheila Allaire
In Memory of
Barbara Rosenwald (sister)
Tom and Jane Sullivan

*In Honor of Ruby, Viviana and
Mariessa*
Douglas A. and
Cristina Dirksen

In Honor of Janet Shing
Barbara J. Baldock
and Phillip N. Butler
In Honor of my mother, Sigrid
Sonja Koehler and
Jim Needham

In Memory of Alma Souza
John and Gail Delorey
In Honor of Summer, GHGH alumni
Chelsea Ferraro
In Honor of George Tanimura
Tanimura Family
Foundation
In Honor of Louise Ventresca
Andrea Scott
In Honor of my mother, a teacher,
Win Wilbur
Beth Wilbur
In Honor of my granddaughters
Sandra Uecker
In Memory of Shahin Anable
Emily Hull-Parsons
Leonard J. Anable, Jr.
In Memory of
Cecilia Preciado Burciago
Flo E. Miller
In Memory of Mary Heying and
Lynette Ruschhaupt
Catherine A. Rusmore
In Memory of Phyllis Krystal
Jeanne S. Holmquist
In Memory of Betty Oliver and
Betsy Kelly
Sarah Strukan
In Memory of Patricia McMurtie
and Lynda Adams
Stephanie McMurtrie-
Adams
In Memory of Rae Mitchell and
Fran Brown
Barbara Lynn Mitchell and
Bill Pardue
In Memory of Sarah Lee Potter
Dave and Janine Potter
In Memory of Donna Vaughn,
Superintendent of Salinas City
Elementary School District
Joanne Taylor Johnson
Girls Health Initiative
Claire Giannini Fund
Monterey Peninsula
Foundation
Nancy Buck Ransom
Foundation
Girls Inc. Stewardship Fund
Sharon Jones
Jessica Govea-Thorbourne
Memorial Fund
Laura M. Solorio
The Peter and Jackie Henning
Fund
Peter and Jackie Henning
Fund for Homeless Women
Administrative Fund
Arkay Foundation
Natalia M. Doner
St. Mary's By The Sea
Episcopal Church
The Fund for Homeless Women
Non-Endowed Fund
Anonymous (10)
Daniel and Joanne Albert
All Saints' Episcopal Church
Philip Anastasia
Johnny Apodaca
Robert J. Armstrong

Joan Arnese
Anita Artstein-Dunsay
John Roger Axe
Roland Bailey
Barbara J. Baldock and
Phillip N. Butler
E. Valerie Barnes, MD
Claudia A. Bartelt
Laura Bayless
Sheila Benson
Joan Bizzozero
Harriet Blume
Linda D. Brandewie
William A. and
Myrna Brandwein
Vanessa Bredthauer
Bride Family Foundation
James H. Brill and
Maureen Martin-Brill
C. Walter and
Carolyn Bryggman
Buchalter/Adler Family Fund
of the CFMC
Gordon L. and
Elizabeth A. Campbell
Julie Campbell
David and Kimberly Caneer
Catholic Daughters of
the Americas Court St.
Angela No. 1532
Bob Cayce
Christian Church of Pacific Grove
Christian Women's Fellowship
Church Women United
Monterey Peninsula
Carol Church
Ellen P. Clarkson
Janet Colson
Robert and Phyllis Conlan
Marianne Conley
Ronald and Eleanor Contreras
Sonia Cook
Maurice G. and Claudia L. Coury
Elizabeth L. Creecy
Dorothy Crosby
Wayne and Linda Cruzan
Robert and Mary Cushing
Renee W. Dalton
Bonnie Daniel
Christina Danley
Gayle Darrigo
Paul and Anne Davis
John Day
Jamey and Christine De Maria
Sarah Diehl and Clay Moltz
M. Susan Ditzler
Natalia M. Doner
Patricia Doran
Mike and Carole Dougherty
Barbara J. Eisiminger
Riane Eisler
Ekuna Men's Group
David and Lois Epel
Manny Ezcurra and
Roxane Buck-Ezcurra
Farrell/Allen Carmel Rotary
Fund of the CFMC
Carroll A. Fergusson
First Presbyterian Church of
Monterey

Charles and RoseAnne Fischer III
Rudy and Kathleen Fischer
Patrick W. and Anita Flanigan
Joe Fleming and
Peggy Dougherty Fleming
Annette Foisie
Larry M. Foster
Kim Fraser
Peter C. and Linda Frederiksen
Mary Anne Garner
Donald and Frances Gaver
Donel and Lynn Geisen
John J. and Margaret Gelke
Margaret Gerba
Bonnie B. Gillooly
Gary L. Girard
William S. and Lynn Goree
Melvin F. and Susan N. Gorelick
Joan P. Gorry
Nancy W. Green, Esq.
Richard L. and
Sandra Grimmer
Guitars Not Guns -
Monterey County Chapter
Florence S. Hall
Barbara Hammond
Matthew J. Hammond and
Su Ling Lin
Arno and Linda Hanel
Margaret A. Hansen
Ann Hasselbach
John S. Hedgcock
Adrienne S. Herman
Delores Heyl
John L. Hickey and
Mary Rudroff Hickey
Judie Higgins
Kenneth Hinshaw
Sally Hitchcock
Hofsway, Inc.
Erma Hole
Patricia Hommes
Rolf E. and
Margaret W. Johnsen
Erika Johnson
Anne Jones
Gretchen Jordan
Mary S. Julien
William Kampe
William M. and Anita Kalpan
Karin Strasser-Kauffman
Gary Karnes
Linda Keill
Kimiye Kendall
Kathleen Knight
Knitty Biddys
Harold E. and Marilyn Kren
George V. and Ramie Kriste
Michael A. and Barbara Lang
Dennis M. Law and Linda Law
David and Cindy Lee
Duncan B. Lewis
Skip and Elizabeth Lord
Gary and Karen Love
Jean Lovell
Marsha J. Lubow
Rich and Jane Lundy
Yvonne Lyon
John and Ann Mahoney
Mickey A. Manning

Francis G. Maroun
Elizabeth Mazik
An McDowell and
Dan O'Brien
Michael K. McMillan
Kathleen McMurdo
Albert and Elaine Menchaca
Joyce E. Merritt
Grover and Michelle Meyrose
Sharon Miller and
Max L. Firstman
William W. Monning and
Dana T. Kent
Monterey County Weekly
Community Fund of the CFMC
Monterey Newcomers Club
Monterey Peninsula
Dickens Fellowship
Monterey Peninsula Friends
Meeting
Robert E. Montgomery, Jr.
and Susan Meister
Jo Ellen Moore
E. Philip Morgan
Francine Morris
Honor Muller
Karen A. Murray
Janet Myer
Joseph T. and Judith A. Neary
Cary and Deborah Neiman
Conrad F. and Sarah L. Newberry
Mavourneen Nolte
Christopher and Wendy Ograin
James and Jeanne Olin
Lois R. Olsen
Manuel and Susan Osorio
Susan Osorio
Janna L. Ottman
Pacific Coast Church
Joyce Park
W. Robert Patterson
Allene A. Payton
Marian Penn
Beth Penney
Marcia Perry
Karen Pfeiffer
Victoria Samora Phillips
Richard and Mary Ann Pirotte
Victoria C. Raggett
Sidney Ann Ramsden Scott
Rex and Joan Reade
Sondra Rees
Glenn and Megan Reis
John Rethke
Kay Rigg and Jean Rigg
Daniel and Judith Riley
Cheryl Trotter Robertson
R. Clark and Nancy Robertson
Brian Robinson and
Barbara Carroll Robinson
Marina Romani
Patricia Ross
Steven and Shirlee Roy
Sharon Russell
William and Claudia Saunders
John D. and Joan Savage
Martha C. Saylor
Milo W. and Mary Scherer
George and Deirdre Schroeder
Lynne T. Sexton

Deborah Sharp
David and Sherry Shollenbarger
Manjit Sidhu
James Sikora
E.F. Skinner and R.J.F. Pace
Christine E. Sleeter
Richard W. and Ann Smallwood
Sid and Joan Smith
William H. Soskin and
Marian R. Penn
Rosemary Spawn
Florence T. Speck
St. Mary's By The Sea
Episcopal Church
St. Mary's Guild of St.
Mary's Church
St. Timothy Foundation, Inc.
Dina Stansbury
Judy A. Stayduhar
Douglas and Jacqueline Steakley
Otto Stengel
Thomas R. Stevens
Shera Stewart
Alice Stoll
Marilyn E. Strandberg
Tia M. Sukin
D.E. and M.L. Sunkler
Bonnie J. Sunwood
John A. and Beatrice S. Tagg
Judith A. Tatelbaum
Suzanne Taunt
Verna Test
Clinton M. and
Diana Lloyd Thelander
Joan J. Thompson
Judy Thompson
Christopher and Sally Tierney
Peggy L. Trebler
Unitarian Universalist Church
of the Monterey Peninsula
Jane Clare Upp
Barbara Utter and
Humphrey B. Heywood
Geoff Van Loucks
Julia B. Veitch
Martin and Mary Jane Vonnegut
Allan and Anne Washburn
Mark R. Wendland Memorial
Fund of the CFMC
Kathy Whilden
Brenda Whitsett
Ann E. Wieser
Douglas and Lois W. Wilhelm
Judy Williamson
Thomas W. and Judith Wills
David and Margaret Wittrock
Lynn E. Yaghoubian
Wendy M. Yen
Carol L. Young
Marie E. Zenorini Canepa
In Honor of Ashley
Frank S. Ludovina and
Susan Morse
In Honor of Grandpa Ben Benson
and In Memory of Grandma
Sheila Benson
Anne Benson-Livernois

CFMC President/CEO Dan Baldwin
speaks at Legacy luncheon



Ocean science education
with O'Neill Sea Odyssey



In Honor of Sheila Benson, Susan Ditzler, Linda Frederiksen, Kathleen McMurdo and Marian Penn

Kenneth M. and Eileen Whitson

In Honor of the Gathering for Women

Joanna Trovato

In Honor of Granny

Ralph and Mattie Jones

In Honor of Bill and Cathy Hines

April L. Fleeman

In Honor of Kathy, Marian and Michael

Donna Johnston

In Honor of

Karin Strasser Kauffman

Joelle Rutherford Juillard, PhD, LCSW

In Honor of Linda Keill

Barbara I. Tilton Keill and Gary Keill

Lincoln J. Keill

Mary Keill

In Honor of Sandy and John Larson

Brenda Aronowitz and Ray Dyck

In Honor of Marian and Baby Eleanor

Ken Vanderman and Marsha Moroh

In Honor of Joan & Terry McHenry

Michael E. Reid and Bill Robnett

In Honor of Grover Meyrose

Benjamin and Cate Barrera

In Honor of Nina Naberhaus

Mary E. Griffin

In Honor of Marian Penn

Karin Strasser Kauffman

In Honor of your 75th birthday, Janet Regan

Ms. Sharon L. Dalkey

In Honor of Michael Reid

Jacqueline Pierce and Michael Masuda

David S. Sabih and Anna Swartley

In Honor of Kate Spacher and Cheryl Trotter

Laura Lee Lienk

In Honor of Rev. Cindy Storrs

Alice Ann Glenn

In Honor of Bonnie Tosh

Rex E. Adams and Tod Lindholm

In Honor of Carol Ann Whelan's 70th Birthday

Sharon L. Dalkey

In Memory of Shahin H. Anable

Leonard J. Anable, Jr.

In Memory of Mrs. Barrett (Timothy Barrett's mother)

Benji Shake

In Memory of Catherine Brandewie

Erin Brandewie

In Memory of John Carnazzo, Mike Lafferty and Baird Pittman

Gerald and Geraldine Carnazzo

In Memory of George Hilleary

Elizabeth Hilleary

In Memory of Alice Pickett

Robert C. and Mary Leslie

In Memory of Sabu Shake, Sr.

Princess Monterey Whale Watching

In Memory of Virginia Stone

Marlene Martin

In Memory of Mary Tringali

Karlen Poma

The Fund for Homeless Women Endowed Fund

Anonymous

The Alexander F. Victor

Foundation of the CFMC

Norman and Ann Bikales

Barbara Bullock-Wilson

Paul and Anne Davis

Natasha M. Doner

Gary L. Girard

Kenneth N. and Anne A. Helms

The Peter and Jackie Henning

Fund of the CFMC

Beverly D. Holloway

Mildred Hitchcock Huff

Charitable Trust

Jan L. McAlister

Stan McKee

Grover and Michelle Meyrose

Alice Stoll

Frederick W. Terman and Nan Borreson

Lonni Trykowski and Jerry Eppler

Florence B. Vonplaten

Jefferey and Nancy Watts

Brenda Webster

In Honor of Cynthia Guthrie, mom

and grandma on her 76th birthday

Park Guthrie

In Honor of Marian Penn

Peter C. and Linda Frederiksen

Michael E. Reid and Bill Robnett

In Honor of Michael Reid

Marion Gamble and John Smitherman

Jan L. McAlister

In Honor of Delilah Robnett

Michael E. Reid and Bill Robnett

Chip Hooper Foundation

Anonymous (9)

Mark Allan

Bama Works Fund of the

Charlottesville Area

Community Foundation

Fred W. Bohlander

Lindsay Brown

Jason Comfort

Evan Cooper

Muriel Curran

Kevin Daly

Kaitlin Deisenroth

Eliza Dilello

Jonathan Drolshagen

Richard Franks

Burton Goldstein

Jim Green

Perry Greenfield

Ralph Hahn

Joseph Hall

Elliott Harrington

Rand Holston

Max Hooper

Seth Hurwitz

Kirby Hutto

Patrick Jordan

John King

Carole Kinzel

David Leiken

James Lewi

Dianne Marino Catalano

Jeff McCallister

Madison McDonald

Mitzy Montoya

Kevin Monty

Stephanie Morris

Tracy E. Morrison

Patrick O'Connor

Elizabeth Pruitt

Red Light Management

Anna Riedesel

Steven Rifkin

Daniel Romanoff

Robert Saady

Daniel Shea

John Valentino

Nathaniel White

In Memory of Chip Hooper

Bo Basic

Eric Bresler

Amy Corbin

Joseph DiStefano

Phil Ernst

Larry Frank

Brian Hill

Amanda Ilgunas

John Innamorato

Ann Kingston

Steven Kirsner

John Duffy McSwiggin

Richard Molinsky

Susan O'Gara

Palace Sports

Robert Mann Gallery

Robert Roux

Lee Smith

Michael Timmins

Ronald VanDeVeen

Ronald Zeelens

Bonnie Hutcheon Scholarship Fund

Estate of Bonnie Hutcheon

Ila Davis Fund

Ila Davis

Harold and Peggy Ipson

and Dan and Sue Ipson

Scholarship Fund

Michael and Gloria Ipson

Janzen Family Fund

Robert W. and Rae Meda Janzen

Birt and Kathleen Johnson,

Jr. Fund

Birt, Jr. and Kathleen Johnson

Bob Jones Boy Scout Camping

Fund

Marc R. Isaacson

In Honor of Bob Jones

Calvin T. Jones and

Terre Rindal

Colburn and Alana Jones

Foundation

Colburn A. and Alana S. Jones

Kernes Adaptive Aquatics

Stewardship Fund

Josephine Kernes Memorial Pool

Barbara Paul and Tom LaFaille Fund

Tom LaFaille and Barbara Paul

Friends of Laguna Seca Capital

Campaign

Steven R. Baker

Martin W. Brauns

Camusi Family Foundation

at Schwab Charitable Fund

Canepa Designs

Jonathan Feiber

Landmark Development Group

Lorne Leibel

Ross and Lauren Merrill

Susan Merrill

Tom W. Minnich

RK Collection, LLC

Ned and Carol Spieker

The Landreth Family Fund

Landreth Family Fund of

the Goldman Sachs

Philanthropic Fund

Legal Services for Seniors

Endowment Fund

Michelle Neubert

Legal Services for Seniors

Stewardship Fund

Legal Services for Seniors

Lehman Family Fund

Gifford and Pam Lehman

Literacy Campaign Fund

David G. Huey and

Carla Hudson

Marvin J. and Karla Wolf

Sandy Loiacono Scholarship Fund

Carroll Family Charitable

Foundation

LULAC Council # 2055 Fund

Erica Padilla-Chavez

John and Kristina Magill Fund

John D. and Kristina Magill

Cappy Martin/Vernon Hurd

Monterey Rotary Club Fund

Anonymous

Daniel and Joanne Albert

Daniel, Jr. and Sharon Albert

The Alexander F. Victor

Foundation of the CFMC

Carl E. and Mary K. Anderson

Armanasco Public Relations, Inc.

David G. and

Christine Armanasco

Aronson Properties, Inc.

Daniel R. Baldwin and

Anne Ylvisaker

Brad and Rosemarie Barbeau

Richard and Renata Barnwell

Jay R. and Gail Bartow

Daniel and Kathryn Biondi

Roger D. Bolgard

James A. and Bridget Booth

Cristofer and Shelley Cabanillas

California Premier Restoration

Carmel Monterey Travel

Agency, Inc.

Chidlav Marketing

Ronald J. and Rosemary Coulter

Richard D. Crowell

Richard T. and The Honorable

Susan M. Dauphine

DL Communications

Wayne G. and

Elizabeth Downey

Marilynn Dunn Gustafson

Norm C. and

Jacqueline R. Edwards

Ryan and Gina Edwards

Four Sisters Inns, Inc.

Susan Freeland and Kenneth Schley

Rene E. Gamero, Jr.

Frank R. and Kathleen M. Geisler

Marvin Guillermo AIA

Russell D. and

Monta L. Haisley

Chuck Harmon and

Elizabeth S. Miles

David and Anne Hober

Denis R. and Claire Horn

Jay and Kip Hudson

Jane Ipsen

Becky B. Jackson

Eric S. and Kathleen Johnsen

Rolf E. and

Margaret W. Johnsen

Ralph Keill and

Helen Corbett Keill

Kennedy, Archer & Giffen

Rick and Martha Kennifer

Robert and Norma Klevan

Kirkor Kocek

Daniel P, Jr. and

Nancy D. Kreer

Harold E. and Marilyn Kren

Clayton C. Larson

Jack Lynch

M3 Environmental

Consulting, LLC

Sean and Nichol Madden

John and Ann Mahoney

Robert F. and Sarah R. Martin

William S. McAfee

Dennis McCarthy

Dan McGilloway, Sr.

Steven and

Morgane McNally

Steve C. and Jeanne Merrell

Robert I. and Leslie Mulford

Gilbert M. Neill and

Rod Woodard

Matthew and Jennifer Nelson

Eduardo M. and Holly Ochoa

Steven J. Packer, MD

Mark Peake

Stephen and Betsey Pearson

Daniel D. and Karen L. Pick

Roy W. Prowell, Jr.

Shawn P. and Lilia Y. Quinn

Rotary Club of Monterey

Terrance D. and

Dannie Lee Ryan

Eric J. Sabolsice

In Memory of Sandra Eckhart and Etta Eckhardt
Anonymous

In Memory of Robert Joe Rodriguez
Joe and Petra Rodriguez

The Morse Foundation Scholarship Fund

Frank and Regina Amato
The Morse Foundation
Stewardship Fund
of the CFMC

Barbara Paul and Tom
LaFaille Fund of the CFMC

The Morse Foundation Stewardship Fund

Monterey Peninsula
Foundation
The Morse Foundation
MPUSD Fund for the Arts

Anonymous
Nancy Buck Ransom
Foundation

Barbara Tomash and
Edward Bussa

Anthony Nicholas Narigi Memorial Baseball Endowment

John and Roxane Narigi
Gilbert M. Neill Math Fund
Gilbert M. Neill

Nonella Family Fund

Diane R. Nonella

Northern Monterey County Foundation

Aromas-Watsonville Fraternal
Order of Eagles #72

Nancy B. Ausonio

Lou and Carol Calcagno

Don D. Chapin

Robert and Anne Herendeen

Ocean Mist Farms

Opportunity Fund

of the CFMC

John M. and Patti Phillips

Libby Oliver Scholarship Fund

John and Tama Oliver

Gladys M. Olvis Scholarship Fund

Gladys M. Olvis

Operating Endowment Fund

Sue Addleman

Barbara B. Bucquet

David G. Huey and

Carla Hudson

Care Terkelson

In Honor of Stephen Davis

The Environmental

Quality Organization, LLC

In Memory of Eric Miller

Sue Miller

Opportunity Fund

Claire Giannini Fund

Doolittle Fund of the CFMC

John R. Marron Fund of the

CFMC

The David and

Lucile Packard Foundation

Mike and Mary Orradre Fund

Michel and Mary Orradre

Out Reach - A Fund for LGBT Life in Monterey County

Dan Baldwin and

Anne Ylvisaker Fund

of the CFMC

Mildred Hitchcock Huff

Charitable Trust

Thomas D. Melville and

James Cooper

The Alexander F. Victor

Foundation of the CFMC

Pacific Repertory Theatre Endowment

Pacific Repertory Theatre

The David and Lucile Packard Foundation Fund

The David and Lucile

Packard Foundation

Nicholas M. Pasculli Fund

Nicholas M. Pasculli

Rancho Cielo Youth Stewardship Fund

Robert Erickson

Reese Family Fund

Bill and Emmy Reese

Richard Scott Reynolds

Science and Technology

Education Scholarship Fund

Richard S. and

Joanna Reynolds

Rotary Club of Monterey,

Cannery Row Fund

Rotary Club of Monterey

Cannery Row

RSH Fund

Anonymous

Salinas Rotary Club Fund

In Memory of Dr. Archie Peterson

and Mr. Martin Dodd

Salinas Rotary Club

Laura Sinks Fund

Laura Sinks

Sobranes Fire Fund

Anonymous (11)

100 Women Who Care

Mary Acquazzion Basham

Mary Adams

Alan and Irene Adler

Aera Energy, LLC

Gregory J. and

Robin Aeschliman

Sharon N. Albrecht

Anne-Marie Alden

Justin Aldi

Linda Alexander

Joshua and Cristela Alfaro

Jeffrey Alford

Judith Allen

Ruth L. Alota

Jai Alpert

Leslie Altherr

Sky Amann

American Legion Auxiliary

Unit 694 of Marina

Cynthia Ammon

Dawn Anderson

Linda E. Anderson

James and

Ginger Andrasick

Robin and Graeme Andrew

Rick and Tonya Antle Fund

of the CFMC

Johnny Apodaca

Guiny Aragon

Vincent Arcaro

David G. and

Christine Armanasco

Robert L. and

Melinda Armstead

Kathleen Armstrong

Geoff and Rebecca Arnold

Arts For The Cause

Alvaro Asevedo

Joseph H. and Alice J. Asling

Charles and Patricia Asmus

Martha Atkinson

Priscilla D. Austin

Tony P. Ayres

R. Lawrence and Sharon Bacon

Deborah Bailey

Sara Baker

Barbara J. Baldock and

Phillip N. Butler

Gary and Judy Bales

Philip Balma

Sandra J. Balzo

Bank of America Charitable

Foundation Matching Gifts

Anne Banta

Allison Barden

James H. and

Lucille M. Barnhart

Eric and Marilyn Barr

Richard F. Barrett

Cynthia Barton

The Baskin Family Trust

Byron and Virginia Bassett

Rich and Laurie Bassin

Denise C. Bates

Seth Bates

Gary Baum

Rolando and Alison Bautista

Linda Karen Baxter

Beall Family Foundation

S.D. Bechtel, Jr. Foundation

Dorothy Becker

Marie P. Beckham

Jane Bednar

David and Judy Beech

Robert Behl

H. Glenn, Jr. and Carol Bell

The Benevity Community

Impact Fund

Benjamin Family Foundation

of the CFMC

Nancy Bennett

Ben and Sheila Benson

Remi Benzaken and

Yoshiko Santell

Harlan J. Bergum

Bernardus, LLC

Paul R. Best

Donald and Lani Beth

Frederick Bialy

Margaret G. Biddle

Big Sur International

Marathon

Big Sur River Inn

Gloria Bigelow

Zane Blackmer

Jeanne Blaha

Malcolm and Lois Bliss

Johann Bloch

Alison Bodenheimer

I. Boelter

Karen M. Boettcher

Michael E. and

Lucia Boggatto

Fred W. Bohlender

Patricia and Mark Boitano

Charitable Fund at

Morgan Stanley Global

Impact Funding Trust

Max Boland

Kirk Bomont

Michael Bond and

Camille M. Liscinsky

Bookshop Santa Cruz

Richard J. and Judy Borda

Borgman Family Foundation

at Schwab Charitable Fund

Robert L. and

Sarah G. Bouchier

Anjali Bower

Mary Boyken

Bruce F. Braden

Cyndra Bradford

John Bradford and

Katherine Littrell

Phillip Bradway

Bradley Brauer

Dana Bravo

Vanessa Bredthauer

Lolei Brenot

Douglas W. Breschini

Melanie Bretz

Ronald A. Breuch

Malcolm and Rebecca Briggs

Judy D. Brinson

Mary Bristow

Rachel Brittain

Paul Brocchini

Hal Brody

Jeffrey and Julie Brody

Brown Family Fund

of the CFMC

Billie Lee Brown

Anthony and

Marilyn Brown

Randal Brown

Patti Bruhoff

Buchalter/Adler Family Fund

of the CFMC

Rex and MaryJane

Buddenberg

Raymond and

Deborah Buettner

Cynthia Buhl

Kim Bui-Burton and

Steven L. Silveria

Ronald Buila

Dasha Bulatova

Will Bullock

P. Kay Burbidge

Judith F. Burdick

Mark Burger and

Michele J. Golman-Burger

Christine Burkart and

Helma Smith

Donna Burych

Richard and Debra Busman

Kirk Busse

Shelly Byrd

Stefano Cacace and

Thea Montella

Alberto M. and Marta Caceres

Café Lumiere

Karen Campbell

Cannery Row Company

Jessica Canning

Michael L. and

Nancy A. Canning

Cathrine Cardinali

Providence Cardinali

Denis and Anne Cardone

Patricia N. Carlson

Carmel Academy of

Performing Arts

Carmel Berry Company

Carmel Chamber of

Commerce

Carmel Highlands Emergency

Carmel Highlands Resident

Fundraiser

Carmel Host Lions Club

Carmel Middle School

Carmel Presbyterian Church

Foundation

Carmel Realty Foundation

of the CFMC

Mary Carrieri

Cheryl Carter

Ruth Carter

Christine P. Casanave

Charles and Cindy Cassinelli

Alison Cathro

CCM&E Destination Services

Michael Chamberlain

Jeffrey T. Chambers and

Andrea Okamura Fund at

Schwab Charitable Fund



SOBERANES FIRE

Community Response

"It's about people helping people," says CFMC President/CEO, Dan Baldwin.

From individual donors to local businesses, the outpouring of support for Soberanes Fire victims was broad and deep. The epic fundraiser at the Monterey Bay Aquarium coordinated by Downtown Dining and local restaurants and wineries generated record-breaking evening attendance and more than \$100,000 for the fund to build early momentum.

Restaurants from Cultura Carmel to Chipotle held benefits. Golf events, pancake breakfasts, wine tastings and concerts were held. Local artists and retailers stepped forward to host fundraising efforts to benefit the Soberanes Fire victims. All told, over \$980,000 was raised, (see page 10).

These pages include a list of individual donors. We thank all those who hosted events and the patrons that supported them. The residents affected by the fire are deeply grateful for the support they have received.



Karen Baxter (second from r) and Lisa Guthrie (second from l) present a check from Santa Lucia Preserve residents to Christine Dawson (l) and Dan Baldwin (r)

Soberanes Fire Fund, Continued

Philip Coniglio
Arthur Cook
Nancy Cook
Richard M. and
Beverly Cook
Leslie Cooley
John and Diane Cope
Mary Jane Cope
The Cork & Plough
Lourdes Coronado
Dale Cosseboom
George Cost
Diane Crawford
James D. Crawford
Bruce Crist and
Joanne Colombo Crist
Catherine Crockett
Margaret Crockett
Shan Crockett
Alexander C. Crosby
Wayne and Linda Cruzan
CSUMB Catalyst Center
Cultura Restaurant
Kevin Curran
Cypress Healthcare
Partners
D. Cook Construction
Terry and Cathie E. Dager
JG Dahlem
Lori D'Ambrosio
Kathryn Damron
Elyse D'Angelo
Helga Danos
Darby Winery
Andrew & Phyllis
D'Arrigo Fund
of the CFMC
The David E. Reese
Family Foundation
Craig and Betty Davis
Lynn and Lydia Davis
Justin and Toni Davis
Amy Dawe
Dawn May Photography
Ramon de la Fuente
Diane E. De Lorimier
Walt deFaria
Joy DeVito
Marcia F. Devoe Fund
of the CFMC
Roderick L. and
Suzanne Dewar
Anna Dibble
Sarah Diehl and
Clay Moltz
Carolyn Dille
Diocese of Monterey
Parish and School-
Resurrection Church
Disaster Kleenup
Specialists
Robert and Barbara
Ditmore Family Fund
at Schwab Charitable
Fund
M. Susan Ditzler
Do It Ourselves Presents
Jonathan Doepeke
Dole Fresh Vegetables
Margaret Donat
Natasha M. Doner
Darryl and Jean Donnelly
William and
Nancy Doolittle
Sterling Doughty III
Downtown Dining, Inc.
Leslie C. Doyle
Karen Drayer
Driscoll Strawberry
& Assoc., Inc.
Margaret Dudley
Jean and Jim Duff Fund
of the CFMC
Roger F. and
Cynthia Dunbar
Sarah E. Duncan
Bruce Dunlap and
Carol Kolb
Clarence and
Anne Dillon Dunwalke
Trust
Barbara Dymond
David A. and
Diane L. Eagle
Earthbound Farms, LLC
George East
Sally Eastham
Patricia Eastman and
Bill Bruffey
Ronald and
Patricia Eastman
Edible Monterey Bay
Mona Eisenberg
Carl and Lois Eklund
Amber Elmwood
Russell Elsberry
Bryan Emerson
Ann Erickson
David and Susan Erickson
Emily Ericson
Esalen Institute
Amy Essick
Gordon E., Jr. and
Ronda Eubanks
Jack W. and Carol Eugster
Charlotte N. Eyerman
David G. and Jill Fanucchi
Robert Farland
Farrell/Allen Carmel
Rotary Fund
of the CFMC
Vanessa Farrer
Annette Favela
Doris Parker Fee Fund
of the CFMC
Jeffery and Tara Feldeisen
Julia Felder
Filipino Women's Club
of Salinas in
Monterey County
Finn & Cohen, CPAs
First United Methodist
Church of Pacific Grove
Howard and Roz Fisher
Leslie Nosek Fisher, CPA
Robert W. Fisher and
Sarah Wood
Anne R. Fitzpatrick
Kevin P. Fobes and
Jacqueline Nalpant
Lynn L. Fonseca and
Theresa M. Lautze
Mary Forbord
Nelson Foreman
Eve Forrest
R. Patrick and
Nancy Forster
Abby Foss
Nancy Fountain
David Fox
Janet Fox
Foxy Couture
Cheryl Fraenzl
Richard S. and
Kathleen Franke
Franklin Legacy Fund
Beth Franks
Joyce K. Frasca
Sean Frederick
Susan Freeland and
Kenneth Schley
Fremont Bank Foundation
Eva Frieberg
Dorothy Fuller
National Philanthropic
Trust-The Sue and
Mort Fuller Fund
Margo and Donald Fuselier
Galerie Plein Aire
Lauren Gambiln
John and Laura Gamble
Richard Gamble
Eugene Ganeles
E. Gannon
Melissa Garren
Ronald Garren
Inocencia Garza
Laura Gasper
Jayne Gasperson
Paul and Ellen Gaucher
Helen M. Gehringer
Ludwig and
Charmaine Geiger
Joanna Geldner
Silverman and
Alan Silverman
Daniel M. and
Margaret C. Gerosin
Kathleen A. Gesell
Ayse Gilbert
William and
Beverly Gilfillan
Constance Gill
David and Susan Gill
Bonnie B. Gillooly
Brian Gingerich
Staci Giovino
Susan Girard
William A. Gisvold and
Kathleen N. Hull
Henry Gitzen
The Glass Jar, Inc.
Dessislava Gnann
Christy Goade
Goddard Family
Foundation
David and
Charlene Golding
Kurt Gollnick and
Janet Rodgers
Brittany Gonzalez
Drew and Myra Goodman
Terry and Andy
Goodman Fund of
the San Francisco
Foundation
Scott Gordon
Stephen M. Gorman
Dan Gotch
Roseanne Gould
Grabe Family Foundation,
Inc.
Helen Grady
Jillian Graham
Malcolm and
Victoria Gray
Jennifer J. Green
Bruce and
Susan Greenbaum
Bruce D. and
Ana M. Greenberg
Michael Greenberg
Todd and Devon Greene
Carol Greenstreet
John and
Barbara Greenway
Robert and
Helena Greenwood
Marcheta T. Griffith
Richard and
Nancy Griffith
Jessica Griffiths
Michael Grimes
Anthony Grissim
Richard and
Cynthia Guthrie
Salvador O. Gutierrez
and Mary Anderson
Habitat for Humanity
Santa Cruz County
Andrew Hain
Debbie Hale and
Andrew Ward
Samuel and Hope Hale
Kathleen Hall and Leslie
Murdock Fund at
Schwab Charitable
Fund
Florence S. Hall
Jack Hall
Kathy Hall
Jennifer Hambleton-
Holguin
Christina Hamilton
Michael J. and
Kimberly A. Hanauer
Joe and Linda Hancock
Sarah Mitchell Hansen
Margaret Hanson
Paul Harasti
Arlene Hardenstein
Richard Hardwig
Carolyn and Cavan Hardy
Sue S. Hardy
Jack and
Stephanie Harkness
Hermine Z. Harman
Harmony at Home
Nancy Harry
Dirk and Karen Harris
Kelli Harris
Reuben and
Tamara Harris
Julie Hart
Kimberlee A. Hartford
Lillian Hartman
Janis Hashe
Pamela and Steve Haste
Shari R. Haste
Michael Hathaway
Janet Hawley
Delroy and Jean Hayunga
Wendy Hayward
Bernice Hearn
Lynn Heatley Brown
Dan Hebert
John S. Hedgcock
Paul and Gina Hein
Eric and Rebecca Heiser
Karl Heisler
Ross and Karen Heitkamp
James R. and
Leslie Helgason
Jason Helgesen
The Peter and
Jackie Henning
Fund of the CFMC
Alfred and
Katherine Herbermann
Michael C. and
Barbara A. Herges
Krista Herr
Stephanie Herrick and
Stephan Mehay
Tony Herz
Karen Hewitt and
Dan LeSeure
Alice Heyman
David M. Higgins
The Dianna J. Higgins
Trust
Geoffrey Hill
John Hill
The Ann Mayer Hiller
Memorial Fund
of the CFMC
Steven W. Hoffman and
Patricia K. Lee
Betty A. Holmgren and
Janet Langland
Lance Holt
Lucy Hook-Willman
Colin K. and
Marianne Horwitz
Julie Howe
Richard and
Marilyn Howell
Milana Huang
Sandra Huarte
Jay and Kip Hudson
David G. Huey and
Carla Hudson
Jeremy Huller
Karen Hutcheson
Carol A. Hutchings, EA
Il Vecchio
Robert R. and
Diana Ingersoll
Earl Ingram
Kristin Ingram
Todd Ingram
Angie Inlow

The Inn at the Pinnacles
Kyoko Ito and Bob Sykes
Carl A. Iverson
J.C. Enterprises
J.R. Backhoe
Fadi Jaber
Lee Jacobs
Brian A. and Ann G. Jacobson
Judith Jaeger
Bradley James
Christopher James
J. James
Helene Jara
Mike and Barbara Jashinski
Ann Jensen
Jodi Jetton
Jewelry Atelier
Carol A. Johnson
Donald B. Johnson
Jennifer Johnson
Kimberly Johnson
Lila M. Johnson
Marjorie E. Johnson
Marshall and Laura Johnson
Courtney Jones
Gretchen Jordan
Richard L. and Denita Jordan
Nicole Jordan
Joy P. Junsay
Tracey Kahan
Dave Katz
Lauren Kayes
Kathryn A. Keeler
Ronald A. and
Susan M. Kellermann
Ryan Kelly
Cheryl Kendall and Glenn Nash
Kimiye Kendall
Lynn and Freddie Kennedy
Mary Kenney
G. and P. Kent
Carlton Keppelman
Nancy Kessler
Ronald Kihara
Karen Kiker
Barry and Nicole Kilzer
L. Channing Kimball
Helen Kincade
Kelly L. Kirby
Jamie Kitz
Denise Klein and
Michael Weber
Bruce Kramer
Kenneth J. Kroopf
Fredric G. Kropp
Ana Krulec
Caron and Alan Lacy
Charitable Fund
at Fidelity Charitable
Katherine Lai
John LaLonde
Maria and Wayne Lamb
Joeleen D. Lambert
Kevin and Edith Landon
The Landreth Family Fund
of the CFMC
Karla I. Lang
Laoaguenian Association
of Monterey County
Kathleen Larabell

Skye Larsh-Faraghan
Mary Larson
Lauren Lash
Charles, Jr. and
Veronica Latty
Marine Layer
Marilyn LeBlanc
Carol Lee Holland
Laura Lee
Terrence Lee and
Elizabeth Weber
Hilary Lefort
Gifford and Pam Lehman
James and Jill Lentowski
Carmen Lepiane
Judy LeRoy and Larry Booker
Richard and Kathleen Leslie
Lawrence V. Levine
Jennifer Levinson
Andrea Lewis and Jeff Fuller
Rita Lewis
William and Jutta Lewis
Donovan Leyden
Lee Lightfoot
Lighthouse Baptist Church
Alex and Margaret Lilley
Lilify
The Linda L. Abbey Living Trust
Lauren Lindsay
Lore Lingner
Philip Lips
Andrew and Teresa Liu
Thomas and Ann Livermore
Christy Lloyd
Carol Long
Herschel and Shirley Loomis
Vince and Tina Starkey Lopez
John C. Lopuch
Caitlin Lorenc
James Lorenz
Nigel and Jinah Lovett
Mylo and Charlene Lowery
Frances Lozano
Lynn C. Lozier
Marsha J. Lubow
Irene A. Lucas Meyenberg
Maria Hope Lucido
Sal and Ada Lucido
Michele Lukas
Diane Lydon
Jill Lynch
Scott and Paula Lyon
Elaine Mackoff and
Joe M. Ouye
Robbin MacRae
Elisa Maddalena
Mia Maddoux
Ivory Madison
Piper Magallanes
Julie Maher
John and Ann Mahoney
Ronda Mahoney
Mahoney/Peterson Family
Fund of the CFMC
Shannon Malone
Carol Maloney
Michele Maloney
Sharon Malvoso
Manco Abbott, Inc.
Mann Packing Co., Inc.

Bryan and Lydia Mansour
Cristina Manuguerra
Anina Marcus
Mike and Tobi Marcus
Pamela Marino
Joseph A. and Sheila Mark
Elizabeth Marks
Dwight and Susan Marshall
Annee Hayden Martin
Danielle Martin
Timothy and Lois Martin
Allison Martin-Attix
Daniel Maschmeier
Wieslaw and Agata Maslowski
Maureen Mason
Mike Mast
Richardson Masten and
Linda Mullaly Masten
Thomas and Susan Masters
Susan Matcham
Maureen Mathews
George and Kristen Matsumoto
David R. and Marilyn Maxner
Camilla D. May
Melanie Mayland
James and Lisa McAlister
Jan L. McAlister
Michelle Noble McCain, Esq.
Laurie McClain
Harry B. McClane and
Sharon Miller
Ruth M. McClendon, MSW
and Leslie B. Kadis
Michael K. McCourt
Marguerite F. and Liam McCurry
Janet McDaniel
Patricia McDermott
Kevin McDevitt
Elizabeth McDonald
K. McDonald
Susan McDonald
Gertrude J. McEwen
Donald, Jr. and Irene McGovern
John McGowan
P J and Raisa McGuire
McIntosh Foundation
Philip McIntosh
McIntyre Vineyard Inc.
Tasting Studio
Kate McIntyre
Susannah McNamara
K. A. Meads and Philip Rosenthal
James Mearns
L. J. Medeiros
Leslie Medford
Armen Megerdichian
Larry Mehringer
Melissa Mendes Campos
Ellen M. Meranze
Joe and Jennifer Merenda
Stan and Sharon Meresman
Timothy J. Meroney
Wayne and Halilana Merrick
James and Cecile Messer
Fred Meurer
Dale Meyer
Susan Michelson and
Richard T. Brophy
Eileen Mihm
Larry and Jenny Miller

Valentine Miller
Susana Millman
Karen Minami
Elizabeth Mirante and
Steve Kurtz
Marlene Mirassou and
Steve Houlihan
Juliette Mistral
Mitchell Vineyards
Bruce Mitchell
William B. and Vicki Mitchell
William Mochizuki
Marilyn Mociun
The Model Bakery, LLC
Vaughan P. and Lynne Monnes
William W. Monning and
Dana T. Kent
Monterey Bay Aquarium
Monterey Bay Aquarium
Bartenders
Monterey Bay Classic
Thunderbird Club
Monterey Bay Teachers
Association
Monterey Composers Forum
Monterey County Hospitality
Association
Monterey County Vintners &
Growers Foundation
Monterey Firefighters
Association
Monterey Museum of Art
Monterey Peninsula
Foundation
Monterey Ski & Social Club
John G. Montgomery
Stacey Montoya
Shirley Moon
Wayne and Shirley Moon
Anthony Moore
John Moore
Stephen Moorer
Kathy Morgan
Debbie Morikawa
Evelyn Moris
Kathryn Morrell
Allston Morris
Richard Morris
Joyce Morrison
Paul and Sandra Morrison
McKenzie Moss
Robert R. and
Marthelin Mountain
Honor Muller
Lindsay P. and Patricia A. Munoz
Spencer and Dee Ette R. Myers
MYO Pure Frozen Yogurt, Inc.
John D. and Marjory Nash Lord
National Philanthropic Trust-
The Sue and Mort Fuller
Fund
Eileen Nazzaro
Sue Neale-May
Scott and Kimberly Negri
Dana Neikirk
Cary and Deborah Neiman
Steve and Judy Nejasnich
Arthur W. and
Robert J. Nelson
Diane L. Nelson

H.R. and M.G. Nelson
Jeffrey Newman
Donald R. and
Laura C. Newmark
Jennifer Nichols
Nicora and Hespe, LLP
F. Bradford and Laura Niebling
Jennifer Niles
Whitney Ning
Ken and Terrie Noren
Mark Norris
Northern California Golf
Association Foundation
Deirdre M. O'Brien
Patrick O'Brien
Ocean Mist Farms
Helen Ogden and
Frederick McGarrity
Jack and Noriko O'Neill
Opportunity Fund
of the CFMC
Mike and Mary Orradre
Fund of the CFMC
Elizabeth A. Ortlip
Susan Osborne
Patricia Ostrom
Frederick O'Such
Carl R. Overhulser
Hiromi Ozawa-Miller
Celia Ozereko
Pacific Grove Museum
of Natural History
Pacific Repertory Theatre
The David and Lucile
Packard Foundation
Julie E. Packard
Jeffrey and Jennifer Paduan
Richard J., EA and
Margaret Pagnillo
Gabriella Parola
Judy Parsons
Stanley and Georgene Pasarell
Nicholas M. Pasculli
Frank Patague
Leslie Patino
Patterson Family Foundation
Barbara Paul and Tom LaFaille
Fund of the CFMC
Stacey Pear
Devon and Emma Pearse
Pebble Beach Company
Pebble Beach Sports Car Club
Judith Pelletier
Dawn Pencovic
Stephanie Perkins
Marcia Perry
Mark Perry
Cheryl Petersen
John Peterson
Ken Peterson and Paulette Lynch
Everette Phillips
Layn and Kathryn Phillips
W. Jeffers Pickard Fund
at Fidelity Charitable
Pierce Ranch Vineyards
Kristen Pilegaard
Rosalie Pinkert
James and Elisabeth Pirkle
Richard and Mary Ann Pirotte



Bradley Zeve



CPOA



Michael Troutman

(l to r) Dan Baldwin surveys fire damage, grants supported culvert repair, new life

Soberanes Fire Fund, Continued

D.H. and Deborah J. Pittman
 Mary Pommerich
 Poppy Hills Holding, Inc.
 Nancy Porter
 Marianne Powers
 Becky Prante
 Preserve Community Foundation
 Patricia Priestley
 Property Restoration Services
 Claudia Pruett
 Laura Pruneda
 Susan Purvis
 Ann Quamen
 John Radebold
 Rafael and Jennifer Ramirez
 Meryl Deyoung Rasmussen
 Rahin Ravanbakhsh
 Ross Watwood Reese
 Glenn and Megan Reis
 Ben and Katherine Reneker
 Maxine Hohman Reneker
 John T. Rhoades and Diane Towns
 Thomas and Michelle Rhodes
 Paul Rice
 Richard McDonald Studio, Inc.
 Gary Richman, PhD
 John Robbins
 Janine Robinette
 Katherine Rochlin
 William and Patricia Roden
 Howard and Sharon Roloff
 Ron Roman
 Marina Romani
 Dennis and Cynthia Romero
 Olga Rose
 Sally Rose
 Therese Rose
 Scott Roseman and Jasmine Berke
 Lawrence and Ruth Rosen
 Andrew Rosenberg
 Marc Rosenblum
 Leslie Rosenfeld and Chuck Walsh
 Wayne Ross
 Rotary Club of Carmel-by-the-Sea
 Rotary Foundation
 Rotary Club of Monterey
 Jeffrey Rothal
 Max Rothal
 Ronald and Camilla Route
 Patrice Rowe
 Julianne Rowley
 Jody Royee
 Lauren Rubin
 Kathleen Ruscac
 Rob and Mary Rustad
 Richard Ryan
 Kenji and Gloria Saisho
 Takamori and Linda Saito
 Claudia C. Sammis
 Amy Sands and Eileen Nazzaro
 Tatyana Sanikovich
 Santa Cruz Ale Works
 Mike Sarmento and V.A. Harbridge-Sarmiento
 Andrea Satterfield
 Harold Frost Saufley IV
 Mary Ellen Scharffenberger
 Urmila Schmit-Cohen
 Stephen J. and Patsy Schulte
 Theodore Schulze

Susan Schwartzwald
 Julia Sclar
 Christopher Scully
 Debra Seltzer
 Lynne Semeria
 Kenneth and Daria Shachmut
 Daniel Shapiro and Hester Parker
 William F. and Kathryn Sharpe
 Will and Mary Shaw Fund of the CFMC
 John M. and Laurie Sheehan
 Kelly Sheehan
 Neil and Jill Sheffield
 Connie Shelstad, E.A.
 Philip Shen
 Andrew and Karen Sheppard
 Marla Sher
 David E. Shipnuck and Mary L. Horton
 Shoreline Community Church
 Sharyn Siebert and Jeff Johnson
 David and Kathy Siegel
 William Siegle
 Debra Silva
 Ken Silveira
 Alan and Sandi Silvestri
 Mathew Simis
 Leslie Simon
 Taylor Simon
 Christine E. Sleeter
 Deirdre Smallwood
 Jane Smiley and Jack Canning
 Boyd and Jill Smith
 James H. and Katrin A. Smith
 Jennifer Smith and Douglas Holtzman
 Joy M. Smith
 Kenneth, Jr. and Dorothy Smith
 Sally Smith
 Steffanie Smith
 Timothy Smith
 Juanita Smith-Nakao
 Snazzy Productions, Inc.
 The Snorf Fund of the CFMC
 Suzy Soo
 Alex Sosa
 William H. Soskin, Esq.
 Michael and Barbara Sovereign
 Sherrie Spendlove
 Spero Collaborative
 John Spoden
 Jonathan and Melanie Stackpole
 Margaret A. Stanford
 Michael and Deborah Stapleton
 Deborah Starr
 The Stasior Family
 Charitable Fund
 Robert Stayton
 Shannon Steckel
 Brian Steen
 P. Steensland and D. Maclean
 Janet Steinberg
 Sterling Property Management
 Larry and Florence Sterling
 Henrietta Stern
 Russell Sterten
 Jean Still
 Dylan Stoddard
 Norton Strand
 Lee Strasburger
 Jean Stumbo
 Nicholas Sturch
 Andrea Susan
 Tom and Jane Sullivan
 Jana Sumavska and Zachary Emil Zucchi
 Don and Claudia Summers
 Emily Sunners
 Arthur and Louisiana Sutton

Michael B. and Elizabeth Sweeney
 Paul and Rebecca Tag
 Rika Takahashi
 Michael Tancredi and Janice Geever Tancredi
 Tanimura and Antle
 Judith A. Tatelbaum
 Suzanne Taunt
 Taylor Farms California, Inc.
 Gustavus and Alden Taylor
 Harris A. and Franc H. Taylor
 John E. and Gretchen Taylor
 Melissa Taylor
 Patrick H. and Betty L. Taylor
 Tammy Taylor
 Mary Anne Teed and Francis Lloyd
 Tonya Tempalski
 Care Terkelson
 The Fred Terman and Nan Borreson Fund of the CFMC
 Michael Terry and Linda Lannon
 Paven Thimmaiah
 Brian and Darrilyn Thomae
 Don and Diane Thomas
 Gary and Betty Thomas
 Michelle Thomsen
 Peter and Anne Thorp Fund of the CFMC
 Judy Tollner
 Tony Tollner
 Orian S. Tolton
 Laura Torissi
 Jaime and Berta Torres
 Marianne Towersey
 Traci Townsend-Gieg
 Morris Trahan
 Ben and Laurie Trainer
 Translation By Design
 Loretta Traum
 Claudia and Marion R. Tucker
 Lynn Turner
 William H. and Susanne S. Tyler Pathway Fund of the CFMC
 Davis Gray Tyndall
 Kevin Robert Uhlinger and Eleanor Swain Uhlinger
 Ifeanyi Umeh
 Erik Upmann
 Luther E. Vaden
 Vallentin Fund of the CFMC
 Bonnie Vasseur
 Sally Vaughn
 Patrice Vecchione and Michael Stark
 Julia B. Veitch
 Venture Gallery-Portola Hotel and Spa
 Dorothy Verhalen
 John and Marie Viarengo
 Daniel Vineyard
 Alfred M. Vinton, Jr.
 Vital Spark Foundation
 Michael and Kristen Vosti
 R.E. and Debra Wacker
 Walter L. Wagenhals
 Jeff Wagner
 Janet Walker
 Sandra Walker
 Michael Wallace
 Gabrielle Walters
 Jason Warburg
 Mary Warburton Boland
 Christina Waters
 Stephen and Jan Watson
 David H. Watts
 Thelma Wayman Weiss and Robert Wayman
 The Webb Family Charitable Trust
 Fay A. Webb
 Charlene Webber-Schuss and Matthew Schuss
 Alicia Weber

Frederic R. Weeth and Carola A. Hogan
 Ralph Wege
 Angela Weigel
 Gregg Weissman
 Wells Fargo Advisors, LLC
 Suzanne Wendt
 Richard Wheat
 Kathy Whilden
 William Whipple
 John W. and Bonnie Whisler
 Bix B. Whitcomb
 Mary Whitney and Betsy Collins
 Robert Whitsitt
 Wiegand Family Foundation of the CFMC
 Wildcat Cove Foundation
 Wildcat Creek Foundation, Inc.
 Russ and Lucille Wiley
 Mary Jo Williams
 Rebecca Williams
 Jayne Wilsey
 Chloe Wilson
 Shari Wisherd
 Lisa Wisser
 William and Kathleen Wojtkowski
 Marvin J. and Karla Wolf
 Jon B. Wolfe
 Donna S. Womble
 Oliver E. and Crete Wood
 Sarah Wood
 Joan I. Woods
 M. S. Woolcock
 Darby M. Moss Worth
 Nancy Wright
 Ralph and Jane Wyrer
 Vern L. Yadon
 The Yeomans Fund of the Community Foundation of Central Illinois
 F. Joseph Yosco
 Graham and Constance Yost
 Susan M. Young
 Kathleen Youngquist
 Youth Arts Collective
 Alyssa Zabala
 Edward and Mona Zander
 Emmet and Carol Zaworski
 Rebecca A. Zeller
 Alan Zeppa
 Marilyn Zetterlund
 Bradley Zeve
 Dona C. Zimmerman, PhD
 Alan J. and Andrea Zurberti
 Jay and Linda Zwagerman
In Honor of all firefighters, police officers and military personnel serving our communities and country
 Larry and Lane Hayes
In Honor of Andreas Baer
 Gabriel Rosen
In Honor of the Climb SF - Mt. Whitney and first love Garapata
 Genevieve Lawson
In Honor of Elaine & Buzz Cole, Linda Thompson, Carol Ferrantelli
 Kevin M. and Kathryn E. Day
In Honor of Carter Comolli
 Kevin and Hannah Comolli
In Honor of Lydia and Lynn Davis
 Ms. Eileen Nazzaro
In Honor of The Dormody Family and Cal Fire Fighters
 Jack and Mary Marchi
In Honor of June Dugan
 Alicia Jones and Elaine Stanton
In Honor of the Fire Fighters
 Richard Stanley
In Honor of Anne and Ken Helms
 Brenda Aronowitz and Ray Dyck

In Honor of Steven Hillyard
 David S. Sabih and Anna Swartley
In Memory of Al Krizelman
 Sheldon Krizelman
In Honor of the KSBW News Staff
 Anonymous
In Honor of Melissa Loftin
 David S. Sabih and Anna Swartley
In Honor of Lone Miller
 Kathryn Sparolini
In Honor of Joanne Stine
 Margie Sentiwany
In Honor of Doug and Jane Tendler
 Cath Tendler-Valencia
In Honor of Alice Villemarie
 Carol A. Johnson
In Memory of Chuck Cohen and Kristi L. Logan
 Kent and Lyn Evans
In Memory of Bartol DiMaggio
 Gary and Beverly Palma
In Memory of Barbara Elliott
 Mark Elliott and Diane Waldherr
In Memory of Rocky Kessler
 Connie Snowdon
In Memory of Fred and Sally McNulty
 Margaret McNulty
In Memory of Andrei Pashin
 Sara Pashin
In Memory of Kelsey Sleeper
 David S. Sabih and Anna Swartley
Southern Monterey County Foundation
 Pier and Norma Azcona
 Bassetti Farms, LLC
 Linda Benway
 Jerry and Paulette Bumbalough
 John and Janet Buttgerit
 Bill and Holly Casey
 Richard and Sharon Casey
 Leslie A. Cederquist
 Robert and Allie Cullen
 D'Arrigo Brothers Company
 Chris and Kathy Davis
 James and Colleen Ewart
 Joe and Linda Grebmeier
 Michel and Denise Hardoy
 Michael and Jamie Lynn Jones
 Los Vaqueros Hunting Club
 Traveling Band
 Janet Massey
 Edwin and Anita McKean
 Lynn E. and Mikel Ann Miller
 Opportunity Fund of the CFMC
 John and Barbara Pekema
 T. J. Plev
Sunset Theater Endowment Fund
 William and Nancy Doolittle
Salinas Valley Memorial Hospital Foundation Stewardship Fund
 Salinas Valley Memorial Hospital Cafeteria
 Salinas Valley Memorial Hospital Foundation
Tassajara Fire Fund
 Anonymous
 Margaret G. Biddle
 Farrell/Allen Carmel Rotary Fund of the CFMC
 Krista Herr
 Gretchen Jordan
 Michael A. Leavy, CFA
 Andrea Lewis and Jeff Fuller
 Lilify
 Elizabeth Mirante and Steve Kurtz
 Marcia Perry
 Tom and Jane Sullivan
 Unitarian Universalist Church of the Monterey Peninsula

Chloe Wilson

Gary and Emma Taylor Fund

Gary Stevens and Emma Taylor

The Fred Terman and Nan Borreson Fund

Frederick W. Terman and Nan Borreson

Shirley I. Thackara Fund

Estate of Shirley I. Thackara

Peter and Anne Thorp Fund

Peter and Anne Thorp

Evelyn Torras Fund

Estate of Evelyn Torras

In Memory of Evelyn Torras

Eugene and Maya Rizzo

Hugo and Dolores Tottino

Family Scholarship Fund

Hugo and Dolores Tottino

Trinidad Gomez Family Fund

Mary Ellen Ferguson

F. Robert Nunes Family Fund

Tularcitos Parent Teacher

Organization Fund

Shaida Behnam

Tyler Visiting Fellowship in

Residence Fund

William H. and

Susanne S. Tyler Pathway

Fund of the CFMC

James Valentine Fund

James R. Valentine

Valentin Fund

Anonymous

Jack Van Zander Cal Alumni

Memorial Scholarship Fund

Paul Brocchini

Jeffrey and Lucy Campen

Alexander C. Crosby

Brian S. and

Betty A. Cureton

Stephen W. Dyer and

Cynthia Martin Dyer

Jean H. Engvall

Joseph and Cynthia Hertlein

Elizabeth H. Hibbard

Jay and Kip Hudson

John and Ann Mahoney

Dennis R. and Susan Mar

Milton A. Marquard, Jr.

Claudia Mauzy Nemir

Alan W. and

Marilyn McMasters

Patrick and

Dorothy Micheletti

Edwin R. and

Katherine M. Munsey

Stifel Nicolaus

Edward Stoddard, DDS

David and JoEllen Stoffel

Madeline Van Zander

Allan and Anne Washburn

In Memory of Jack Van Zander

Patricia Bernardi

Cal Alumni Club of the

Monterey Peninsula

Gordon L. and

Elizabeth A. Campbell

Betty Dolezal

John and Nancy Durein
Clifford and Elaine Dutra

Richard and

Amelia Franke

Roy Kaminske

Joanne Kelly, Esq.

Law Offices of

Edward S. Wright

Richard and

Ethyl Radowicz

Elizabeth Y. Snow

Michael and

Barbara Sovereign

Robert Tilly

Kenneth J. and

Martha A. Wilkinson

Ventana Trails Forever Fund

Brook Kraeger

Chuck Tremper and

Sue Thomas

In Memory of Paul Danielson

Jack Glendening

The Alexander F. Victor

Foundation

The Alexander F. Victor

Foundation

Visiting Nurses Association

and Hospice Stewardship

Fund II

Central Coast VNA and

Hospice

Mark R. Wendland Memorial Fund

Fred and Jan Hodder

Jackie Wendland

In Memory of Mark Wendland

Raymond L. Hayward

Youth in Wilderness Fund

In Memory of Paul Danielson

Tom and Julie Anne Hopkins

Women's Fund Endowment

Anonymous (2)

Guy Agreti

Amy Anderson and

George Somero Fund

of the CFMC

Rick and Tonya Antle Fund

of the CFMC

Augustina, Inc.

The Peggy and Jack Baskin

Foundation

David and Laurie Benjamin

Michael E. and Lucia Boggiatto

Sarah G. Bouchier

Jason and Melissa Burnett

Family Fund at Fidelity

Charitable

Julie A. Cason and Lisa K. Crawley

Central Coast Federal

Credit Union

Erin Clark

Comerica Wealth Management

D'Arrigo-Martin Fund

of the CFMC

William and Nancy Doolittle

Marilynn Dunn Gustafson

Foxy Couture

Krista Hanni and Scott Davis

The Peter and
Jackie Henning Fund
of the CFMC

Carmen Herrera-Mansir

J. D. and Missy Jensen

Elizabeth Kurzava

Gifford and Pam Lehman

Jean Lovell

Scott and Kimberly Negri

Randall Rolfe

Nancy Scheid

Laura Sinks Fund of the CFMC

Jennifer Smith and

Douglas Holtzman

The Snorf Fund of the CFMC

Lynn Storey

Tanimura Family Foundation

Glenn and Sheila Tanimura

Vallentin Fund of the CFMC

Joanne Webster

Caitlin Antle Wilson

Marvin J. and Karla Wolf

In Honor of Sarah Bouchier

Cheryl Carter

In Honor of Carrie Mann

Christina Watson

In Honor of Cheri Townsend,

Anthony & Nadine Townsend,

Clarissa Miller, Anna Marie

Lopez, Mary & Patrick Casey,

Carol Charney, Linda Hanger &

Dan Finklea, Heather Hubbanks,

Nancy & Gary Moon, Natalie

McChesney, Dora, Mario and

Rick Lopez, Kent & Laura Ciucci,

Carmy Price & Steve Timsak,

Tobi Marcus, Christine Winge

& Stephen St. Germain, Joanne

Perron and Ruth & Mike Rachel

Traci Townsend-Gieg

Marsha McMahan Zelus Fund

Marsha McMahan Zelus

Other Gifts

Anonymous (2)

The Allison Charitable Fund

at Vanguard Charitable

Jay R. and Gail Bartow

Carmel Monterey Travel

Agency, Inc.

Scott and Pamela Denney

Susan Freeland and

Kenneth Schley

Patricia Hughes

Karin Strasser-Kauffman

Kirkor Kocek

Harriet Mitteldorf

John B. O'Sullivan

Richard J., EA and

Margaret Pagnillo

David M. Spradling

Michael Tibbott and

Marji Knowles

Charlene Webber-Schuss

and Matthew Schuss

Bradley Zeve

In Memory of Mary Beth Frearson

Kathleen R. Anderson

Carol May Bixby

Thomas H. and

Joyce George

Howard C. and

Jane C. Given II

H&W Ingredients

Lee K. Johnson

Johnson-Schmidt,

Architect P.C.

Barry and Nicole Kilzer

Mickey A. Manning

Scott and Carol Manning

John R. and

Lillius McClure

J. D. and

Elviera Messersmith

Doyle and Mary Moses

Naqada Pacific

Ingredients Inc

Susan Rippa

Patrick and Kathy Ryan

Mary Severson

Ronald M. Shimizu

Peter and Irene Snow

Corrine Tyler

Ultra Ingredients, Inc.

Vandervort Tile

Event Sponsors

1st Capital Bank

Bank of America

Bianchi, Kasavan & Pope, LLP

Lucia Boggiatto

Sarah Bouchier

Braga Fresh Family Farms

Kevin Cartwright

Central Coast Federal

Credit Union

Contemporary Catering

Margaret D'Arrigo-Martin

Joanne Taylor Johnson

Josie's Organics

Deborah Kosmont

Sam Linder Auto Group

Matsui Nursery

Jane McCoy

Karen Miller

Moxxy Marketing

Natividad Foundation

Oak Shores Realty

Pinnacle Bank

Precision Nails

Schaefer Present & Stoffers

Investment Group

Scheid Vineyards

Tanimura & Antle

Tanimura Foundation

Suzanne Taunt

Maija West

Wharf Marketplace

Ken and Mary Wright

In Kind Donors

A2Z Printing

Bob the Printer

Casey Printing

Richard Green Photography

Monterey County Weekly

Own It, Feel It, Live It -

Diane Danvers-Simmons

PSAV-Hyatt Regency

Monterey

Michael Troutman

Randy Tunnell Photography

Scheid Vineyards

TMD Creative

LEAD & CNE Presenters

Dick Bower

Sherrie Collins

Lisa Corpuz

Aimee Cuda

Mireya Gomez-Contreras

Robbie Gonzalez-Dow

Siobhan Greene

Joel Hernandez

Amanda Holder

Eva Holt-Rusmore

Pam Krone

Sabino Lopez

Nick Pasculli

Yessica Vega Rincon

Francine Rodd

Judy Sulsona

LEAD Coaches

Anne Auburn

Jennifer Britton

Gary Byrne



Randy Tunnell

CFMC Investment Committee: Seated (l to r) Bill Sharpe, Ken Petersen, Teri Belli, David Benjamin. Standing (l to r) Steve McGowan, Craig Johnson, Dan Baldwin, Jeff Eikenberry, Steve Dart. Not pictured: Bill Doolittle, Anne Westrich (Verus)

INVESTMENT STEWARDSHIP

The board of directors and staff of the CFMC steward the charitable assets entrusted to us for the betterment of Monterey County in perpetuity. With a distinguished investment committee and the consultancy of Verus, we invest these resources for the long term, to protect and preserve the endowment, while allowing growth to fuel future grantmaking.

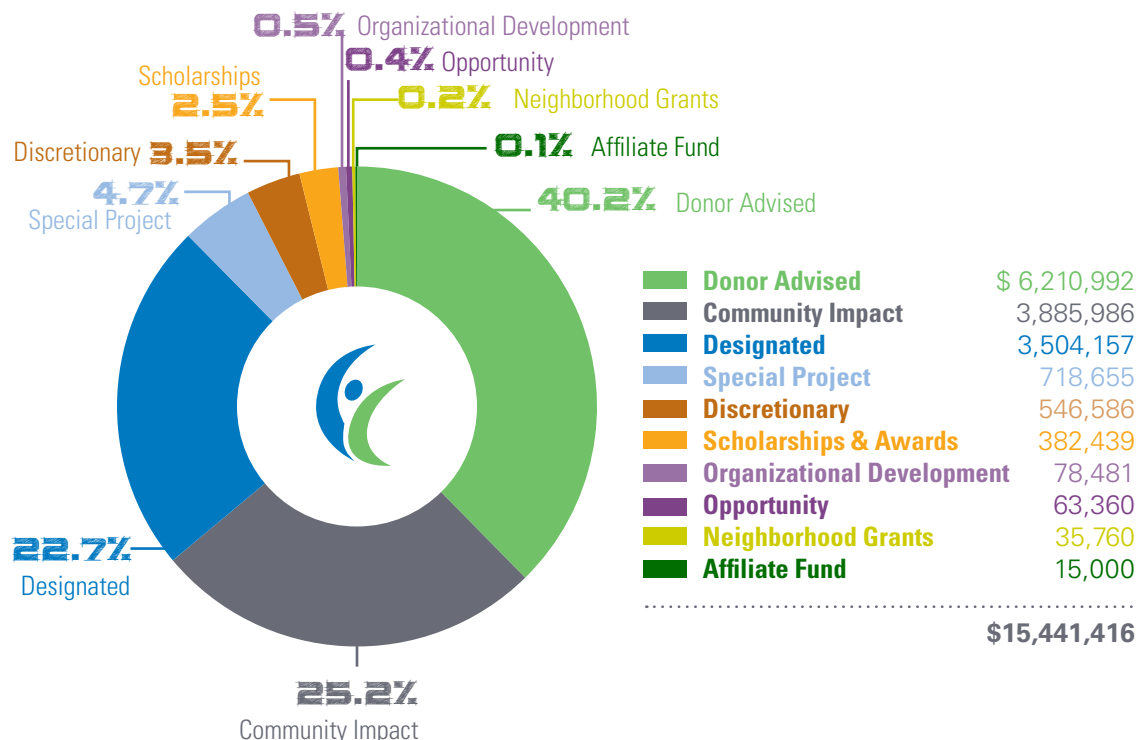
CFMC fund holders now have three investment options to choose from. In addition to the Primary Portfolio and Medium Term Fund, the ESG (Environmental, Social and Governance) Portfolio, for those who prefer socially responsible investments, was added in 2016.

www.cfmco.org/finances

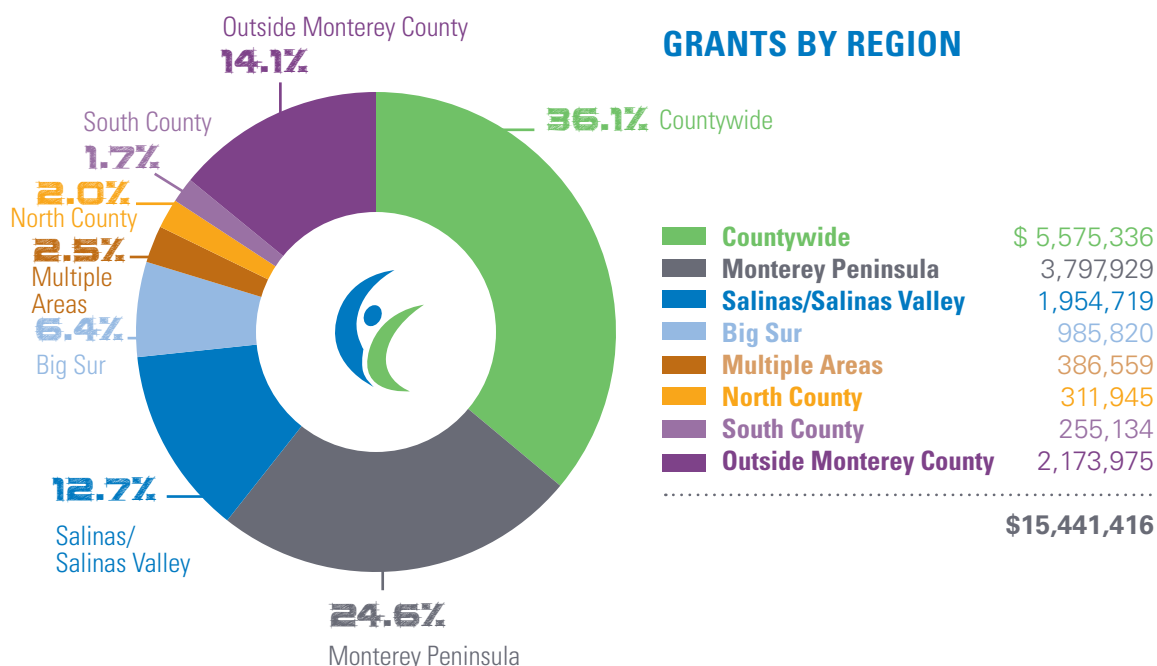
GRANTS BY THE NUMBERS

The record \$15.4 million granted in 2016 was distributed from a variety of fund types to many different program areas. Below is a breakdown of the type of grant awarded and grants by geographic region. For a list of grants by program area, please see page 11.

TYPES OF GRANTS



GRANTS BY REGION



COMMUNITY FOUNDATION FOR MONTEREY COUNTY

CONDENSED STATEMENT OF ACTIVITIES AND CHANGES IN NET ASSETS FOR THE YEAR ENDED DECEMBER 31, 2016

ADDITIONS

Contributions*	\$22,796,222
Other income	260,497

Total revenues and support	23,056,719
----------------------------	------------

INVESTMENT GAIN	10,650,197
-----------------	------------

GRANTS AND EXPENSES

Grants*	14,145,577
Other operating expenses	3,011,665

Total grants and expenses	17,157,242
---------------------------	------------

INCREASE IN NET ASSETS	16,549,674
------------------------	------------

NET ASSETS

Beginning of year	150,578,654
-------------------	-------------

End of Year	\$167,128,328
-------------	---------------

* net of contributions received and grants disbursed on behalf of nonprofit agency and stewardship funds

CONDENSED STATEMENT OF FINANCIAL POSITION AS OF DECEMBER 31, 2016

ASSETS

Cash and equivalents	\$11,219,874
Contributions receivable	1,643,353
Other assets	32,732
Property and equipment, net	3,273,461
Investments, carried at market value	
Mutual funds and equities	159,545,229
Cash and money market funds	4,513,612
Charitable gift annuities	390,466
Beneficial interest in remainder trusts administered by other trustees	2,730,408
Investments held in charitable remainder trusts	24,614,873

Total assets	207,964,008
--------------	-------------

LIABILITIES AND NET ASSETS

Grants payable	1,969,780
Accounts payable and accrued expenses	107,865
Liabilities under split-interest agreements and charitable remainder trusts	18,154,949
Funds held for others	20,603,086

Total liabilities	40,835,680
-------------------	------------

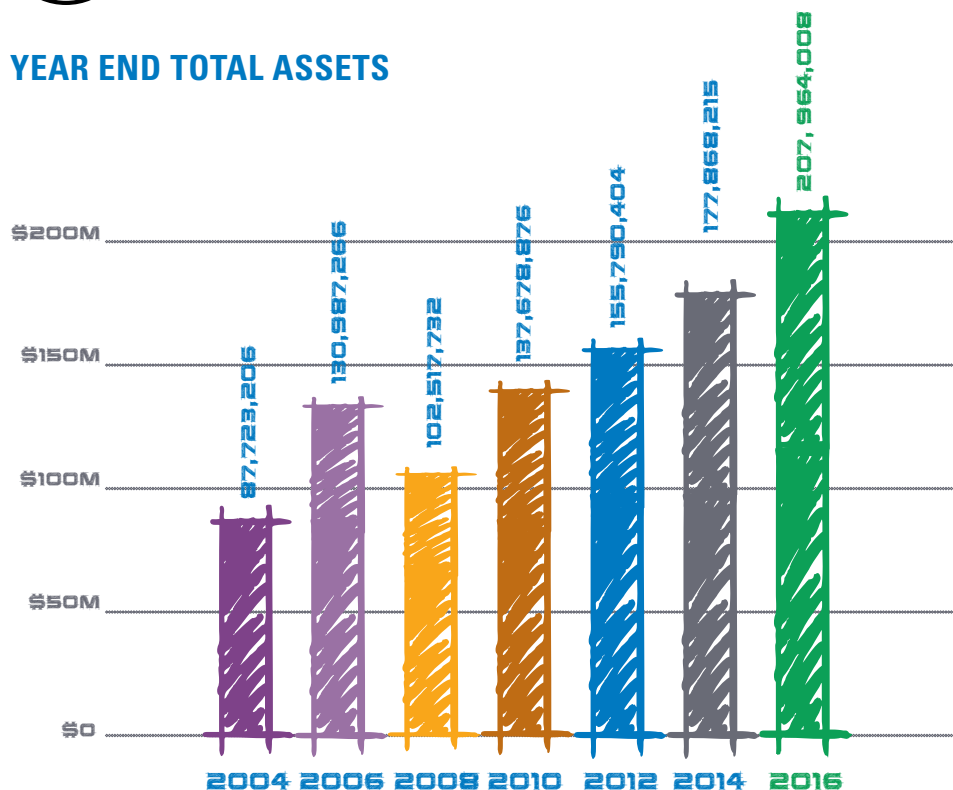
Total net assets	\$167,128,328
------------------	---------------



Confirmed in Compliance with National Standards for U.S. Community Foundations
Member, League of California Community Foundations

The condensed financial information was prepared based upon audited financial statements prepared by Hutchinson and Bloodgood LLP.

YEAR END TOTAL ASSETS



Year	Amount (\$)
2016	207,964,008
2014	177,868,215
2012	155,790,404
2010	137,678,876
2008	102,517,732
2006	130,987,266
2004	87,723,206

8.0%
CFMC
PORTFOLIO
RETURN 2016

LEADERSHIP



Photos by Richard Green

BOARD OF DIRECTORS

Back (l to r):

Fred Meurer, Owner, Meurer Municipal Consulting
 Jeff Eikenberry, Former Senior Vice President, Jackson Family Wines
 Kenneth Wright, Community Volunteer, Retired California Highway Patrol
 Rick Kennifer, Attorney at Law, Johnson, Fantl & Kennifer, LLP
 Steve McGowan, Former CFO, Sun Microsystems, Inc.
 Bill Mitchell, Co-owner, Carmel Realty Company
 Birt Johnson, Jr., Community Volunteer, former GM, AT&T
 Catherine Kobrinsky Evans, Partner, The Kobrinsky Group
 Nolan Kennedy, Attorney at Law, Kennedy, Archer & Giffen
 Ken Petersen, President, Monterey Private Wealth
 Greg Chilton, Attorney at Law, Chilton & House, LLP
 William Sharpe, Professor Emeritus, Stanford University's Graduate School of Business

Front (l to r)

Anna Marie Ponce, Owner, Sun Valley Berries, LLC
 Patti Hiramoto, AVP of Inclusive Excellence, Chief Diversity Officer, CSU Monterey Bay
 Betsey Pearson, Retired, United Way of Monterey County, Nonprofit Consultant
 Betsy Buchalter Adler, Trustee and Program Officer, Claire Giannini Fund
 Tina Starkey Lopez, Owner, JV Automobiles
 Teri Belli, Owner, tBelli Consulting, CFO, Belli Architectural Group
 Erica Padilla-Chavez, CEO, Pajaro Valley Prevention and Student Assistance
 Ida Lopez Chan, Senior Vice President, Wells Fargo Bank

We are especially grateful to:

Tonya Antle, Stephen Dart, Gail Delorey, James Panetta, Judge John M. Phillips and Raul Rodriguez for their board service, which ended in 2016.

STAFF

Standing (l to r)

Dan Baldwin, President/CEO
 Kaki Rusmore, Director Center for Nonprofit Excellence
 Karina Gutierrez, Grants and Office Administrator
 Guadalupe Aguilera, Accounting Coordinator
 Josh Warburg, Program and Scholarships Officer
 Diane Nonella, Director of Finance and Human Resources
 Mackenzie Little, Philanthropic Services Associate
 Cristina Dirksen, Communications Associate
 Brian Thayer, Senior Philanthropic Services Officer
 Jan McAlister, Development Associate
 Phillip Carey, Accounting Manager
 Amanda Holder, Director of Communications
 Janet Shing, Director of Grantmaking

Seated (l to r)

Susie Polnaszek, Program Officer
 Julie Conrad, Administrative Services Manager
 Laurel Lee-Alexander, Vice President of Grants and Programs
 Christine Dawson, Vice President of Philanthropic Services
 Aurelio Salazar, Jr., Program Officer and Latino Philanthropic Services

Not pictured: Minnie Elliot, Administrative Coordinator

Monterey Jazz Festival
 in the schools



Arts Council for Monterey County mural project

Ventana Wildlife Society youth camp

2016 COMMITTEES

BOARD COMMITTEES

Executive Committee

Greg Chilton (Chair)
Steve McGowan (Vice Chair)
Ken Wright (Secretary)
Gail Delorey (Treasurer)
Patti Hiramoto
Ken Petersen

Audit Committee

Tina Starkey Lopez (Chair)
Greg Chilton
Ken Petersen

Finance Committee

Gail Delorey (Chair)
Teri Belli
Steve Dart
Greg Chilton
Ken Wright

Governance Committee

Rick Kennifer (Chair)
Greg Chilton
Birt Johnson, Jr.
Tina Starkey Lopez
Ken Petersen
Ken Wright

Grants and Programs Committee

Patti Hiramoto (Chair)
Ida Lopez Chan
Birt Johnson, Jr.
John M. Phillips
Anna Marie Ponce
Ken Wright

Investment Committee

Ken Petersen (Chair)
David Benjamin
Greg Chilton
Steve Dart
Gail Delorey
Bill Doolittle
Craig Johnson
Rick Kennifer
Steve McGowan
Bill Sharpe

Resource Development Committee

Steve McGowan (Chair)
Betsy Buchalter Adler
Tonya Antle
Greg Chilton
Catherine Kobrinsky Evans
Kurt Gollnick
Erica Padilla-Chavez
Jimmy Panetta
Raul Rodriguez

ADVISORY COMMITTEES

Community Impact Grants

Ida Lopez Chan (Chair)
Patti Hiramoto (Chair)
Ken Wright (Chair)
Betsy Buchalter Adler
Debbie Anthony
Paulette Bumbalough
Meg Clovis
Steve Dennis
Alfred Diaz-Infante
Catherine Kobrinsky Evans
Oscar Flores
Sharon Gish
Diana Jimenez
Chris Lopez
John M. Phillips
Seth Pollack
Rosemary Soto
Mark Verbonich

Northern Monterey County Foundation Advisory Board

Don Chapin (Chair)
Nancy Ausonio
Leslie Austin
Ricky Cabrera
Lou Calcagno
Jesus Corona
Anne Herendeen
Karen Miller
Manuel Osorio
Joe Pezzini
John M. Phillips

Professional Advisor Council

Cris Cabanillas, Monterey Private Wealth
Greg Chilton, Chilton & House, LLP
Gail Delorey, Bianchi, Kasavan & Pope, LLP
Bruce Dunlap, Hayashi Wayland
Nick Fantl, Johnson, Fantl & Kennifer, LLP
Leslie Finnegan, Noland, Hamerly, Etienne & Hoss
Liza Horvath, Monterey Trust Management
Michael Jones, Thompson Jones, LLP
Rick Kennifer, Johnson, Fantl & Kennifer, LLP
Kathy Kobata, Tostevin
Accountancy Corporation
Kyle Krasa, Krasa Law
Anne Leach, Ottone, Leach, Olsen & Ray LLP
Gifford Lehman, Integrus Wealth Management
Stephen Pearson, Noland, Hamerly, Etienne & Hoss
Ken Petersen, Monterey Private Wealth
James Stiles, Hayashi & Wayland

Real Estate Advisory Committee

Thomas Bohnen
Christine Chin
Catherine Kobrinsky Evans
James Heisinger
Rick Kennifer
Tina Starkey Lopez
John Mahoney
Bill Mitchell
Ken Wright

Robert and Virginia Stanton Endowment Committee

Ramona Smith (Chair)
Iathan Annand
Stephen Dart
Kip Hudson
Breck Tostevin
Mary Wright

Southern Monterey County Foundation Advisory Board

Paulette Bumbalough (Chair)
Linda Benway
Grace Borzini
Rich Casey
Rob Cullen
Michel Hardoy
Jaimie Lynn Jones
Mikel Ann Miller

Women's Leadership Advisory Council

Tonya Antle (Chair)
Sarah Bouchier
Kevin Cartwright
Julie Cason
Margaret D'Arrigo-Martin
Christine Dawson
Vanessa Diffenbaugh
Jeri Gattis
Krista Hanni
Stephanie Harkness
Felicia Perez Kausin
Kate Daniels Kurz
Laurel Lee-Alexander
Jan McAlister
Kim Negri
Judie Profeta
Diane Danvers Simmons
Jeannie Tanimura
Traci Townsend-Gieg
Maija West



IN MEMORIAM 2016

Barbara Babcock
Women's Fund Leadership Council

Judge Harkjoon Paik
former CFMC board member

Evelyn Torras
Legacy Donor

Legacy Donors
Bonnie Hutcheon,
Paul Edward Rochester,
Pamela Smith, Shirley Thackara



CFMC staff present Neighborhood grant to African American HIV/AIDS Wellness Group

Pacific Grove Museum of Natural History Science Saturday



PARTNER WITH US



"WE ARE FINDING THE
COMMUNITY FOUNDATION TO
BE A WONDERFUL GUIDE
AS WE BEGIN OUR
PHILANTHROPIC JOURNEY."

- Giff and Pam Lehman
Donor Advised Fund Holders

Individuals, families, nonprofits and businesses can make a difference and enhance their philanthropy through a fund at the Community Foundation for Monterey County in three simple steps.

START A FUND It's simple



CREATE

Our team works with you to create a fund that reflects your charitable vision. Establish the fund in your name, your family's or company's name, in honor of a loved one, or have it be anonymous.



CHOOSE

You choose the assets to make a gift to create the fund. Cash, publicly traded securities, closely held stocks, real estate or tangible personal properties are often used. You can also direct a gift from your will or trust to create or add to a fund.



GIVE

Recommend grants from the fund. We can help you make a difference on issues and causes that matter to you most, anywhere in the world.

WHEN TO BEGIN

While anytime is a good time, consider a fund when:

- A financial event occurs (such as the sale of business or estate gift) and you are about to receive new assets
- You update your will or trust
- It is tax-wise to make a gift before year-end
- You are thinking about creating a private foundation

A fund performs much like your own private foundation, but without any of the legal or administrative burdens. It can be created in a matter of hours at no start-up cost to you, compared to the time and financial expense required to create a private foundation. Your gift of \$5,000 or more can create a donor advised fund today.

JOIN US!

Give us a call at 831.375.9712 or visit our website.

 www.cfmco.org/donors



Here for Good

Community Foundation
for Monterey County

THANK YOU!

Our accomplishments are only made possible through your support.

2016 HIGHLIGHTS

Monterey County Gives!

Record Grants
**\$15.4
MILLION**

**\$3.65
MILLION**

Received
**\$34.5
MILLION**
in Gifts

Surpassed
**\$209
MILLION**
in Assets

158
Nonprofits Strengthened
through Center for
Nonprofit Excellence

Expanded
Scholarships
\$380,000
Awarded

**SOBERANES
FIRE FUND**
Created

www.cfmco.org



BACK COVER PHOTOS: (l to r) Watsonville Wetlands
Watch, firefighters at Soberanes Fire (Michael Troutman),
Positive Discipline Community Resources playgroup

Annual Report design by TMD Creative

Monterey Office
2354 Garden Road
Monterey, CA 93940
831.375.9712
Fax 831.375.4731

Salinas Office
945 S. Main St., Suite 207
Salinas, CA 93901
831.754.5880
Fax 831.754.5876

info@cfmco.org

 www.facebook.com/cfmco
 [@cfmco](https://twitter.com/cfmco)



Here for Good

2354 Garden Road, Monterey, CA 93940

www.cfmco.org

www.facebook.com/cfmco



Healthy, Safe, Vibrant
COMMUNITIES